

# **Epson Stylus<sup>®</sup> Photo 1400**

## **User's Guide**

## **Copyright Notice**

All rights reserved. No part of this publication may be reproduced, stored in a retrieval system, or transmitted in any form or by any means, electronic, mechanical, photocopying, recording, or otherwise, without the prior written permission of Seiko Epson Corporation. The information contained herein is designed only for use with this Epson product. Epson is not responsible for any use of this information as applied to other equipment.

Neither Seiko Epson Corporation nor its affiliates shall be liable to the purchaser of this product or third parties for damages, losses, costs, or expenses incurred by purchaser or third parties as a result of: accident, misuse, or abuse of this product or unauthorized modifications, repairs, or alterations to this product, or (excluding the U.S.) failure to strictly comply with Seiko Epson Corporation's operating and maintenance instructions.

Seiko Epson Corporation shall not be liable for any damages or problems arising from the use of any options or any consumable products other than those designated as Original Epson Products or Epson Approved Products by Seiko Epson Corporation.

### **A Note Concerning Responsible Use of Copyrighted Materials**

Epson encourages each user to be responsible and respectful of the copyright laws when using any Epson product. While some countries' laws permit limited copying or reuse of copyrighted material in certain circumstances, those circumstances may not be as broad as some people assume. Contact your legal advisor for any questions regarding copyright law.

## **Trademarks**

Epson, Epson Stylus, Claria, and MicroPiezo are registered trademarks; Epson Exceed Your Vision is a registered logomark; and Supplies Central is a service mark of Seiko Epson Corporation.

BorderFree and RPM are registered trademarks, PhotoEnhance is a trademark, and Epson Connection is a service mark of Epson America, Inc.

General Notice: Other product names used herein are for identification purposes only and may be trademarks of their respective owners. Epson disclaims any and all rights in those marks.

This information is subject to change without notice.

# Contents

<b>Welcome</b> .....	<b>7</b>
Exif Print .....	7
About Your Documentation .....	8
<b>Printing from Start to Finish</b> .....	<b>9</b>
Loading Paper .....	9
Special Papers .....	12
Printing with Windows .....	16
Selecting Default Settings .....	19
Printing with a Macintosh .....	20
Mac OS X 10.5 .....	20
Mac OS X 10.3 and 10.4 .....	23
Selecting the Correct Paper Type .....	27
Printing Borderless Photos .....	28
Borderless Printing with Windows .....	29
Borderless Printing with a Macintosh .....	32
Storing and Displaying Your Prints .....	34
Printing on CDs and DVDs .....	34
Cleaning the Rollers .....	35
Inserting a CD or DVD .....	35
Designing and Printing a CD/DVD with Windows .....	37
Designing and Printing a CD/DVD with a Macintosh .....	41
Direct Printing from a Digital Camera or Camera Phone .....	46

<b>Maintaining Your Printer</b> . . . . .	<b>47</b>
Checking the Print Head Nozzles . . . . .	47
Cleaning the Print Head . . . . .	48
Replacing an Ink Cartridge . . . . .	50
Checking the Ink Status . . . . .	50
Purchasing Ink Cartridges . . . . .	51
Ink Cartridge Precautions . . . . .	52
Removing and Installing Ink Cartridges . . . . .	53
Aligning the Print Head . . . . .	57
Cleaning the Printer . . . . .	58
Transporting the Printer . . . . .	59
 <b>Solving Problems</b> . . . . .	 <b>61</b>
Diagnosing Printer Problems . . . . .	61
Running a Printer Check . . . . .	63
Problems and Solutions . . . . .	64
Setup and Software Installation Problems . . . . .	64
Printer Problems . . . . .	65
Print Quality Problems . . . . .	67
Problems with Paper Feeding . . . . .	69
CD/DVD Printing Problems . . . . .	71
Miscellaneous Printout Problems . . . . .	72
Uninstalling Printer Software . . . . .	74
Windows . . . . .	74
Macintosh . . . . .	74
Where To Get Help . . . . .	75
Epson Technical Support . . . . .	75
Purchase Supplies and Accessories . . . . .	76
Other Software Technical Support . . . . .	76

**Requirements and Notices . . . . . 77**

Windows System Requirements . . . . . 77

Macintosh System Requirements . . . . . 77

Important Safety Instructions . . . . . 78

    Ink Cartridge Safety Instructions . . . . . 79

FCC Compliance Statement . . . . . 80

Declaration of Conformity . . . . . 81

Epson America, Inc. Limited Warranty . . . . . 82

**Index . . . . . 85**



# Welcome

Your Epson Stylus® Photo 1400 is a full-featured, wide-format photo printer. With its exceptional speed and print resolution, you can print superior photographs and enlargements and use it for all of your everyday printing. It provides you with these advanced features:

- Claria® Hi-Definition ink for the ultimate combination of photo quality and longevity
- Smooth gradations and sharp detail with Epson's patented MicroPiezo® print head and DX5™ technology
- Automatic photo correction when printing from Windows® and Mac OS® X 10.5
- True BorderFree® frame-ready prints on select 4 × 6, 5 × 7, 8 × 10, letter-size, 11 × 14, 11 × 17, 13 × 19, and even 12 × 12 scrapbook-size papers
- CD and DVD printing on ink jet-printable CDs and DVDs
- PictBridge™ or USB Direct-Print printing directly from your digital camera or camera phone

---

## Exif Print

The Exif (Exchangeable Image File) Print format includes information about your digital camera settings in JPEG/TIFF files so your printer and application can use them to create accurate print settings. Most digital cameras store Exif Print information such as shutter speed, metering, flash, exposure settings, resolution, and lens use in the JPEG/TIFF image file. Your printer uses the information to ensure the most accurate image reproduction.

---

# About Your Documentation

To set up your printer and install its software, see the *Start Here* sheet.

This book contains instructions on loading paper, printing with Windows and Macintosh,<sup>®</sup> printing borderless photos, printing on CDs and DVDs, direct printing from a digital camera or camera phone, maintaining your printer, and solving basic problems.

For more information about your printer, see the on-screen *Reference Guide* by double-clicking the icon for it on your desktop.

Please follow these guidelines throughout:

**Warning:**

Warnings must be followed carefully to avoid bodily injury.

**Caution:**

Cautions must be observed to avoid damage to your equipment.

**Note:**

Notes contain important information about your printer.

**Tip:**

Tips contain hints for better printing.



# Printing from Start to Finish

Follow the steps in these sections to load paper, CDs, or DVDs, and print from your computer, digital camera, or camera phone:

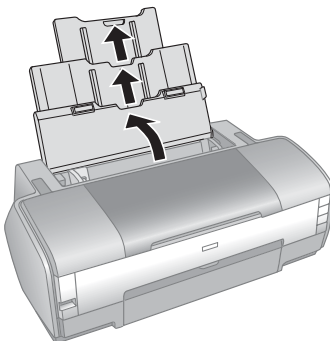
- “Loading Paper” below
- “Printing with Windows” on page 16
- “Printing with a Macintosh” on page 20
- “Selecting the Correct Paper Type” on page 27
- “Printing Borderless Photos” on page 28
- “Printing on CDs and DVDs” on page 34
- “Direct Printing from a Digital Camera or Camera Phone” on page 46

---

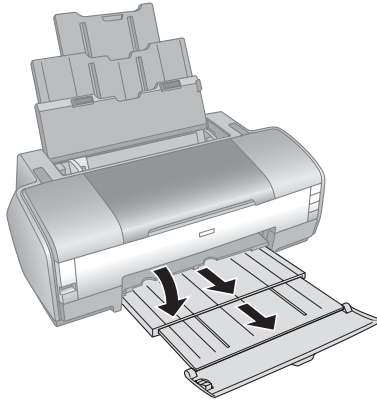
## Loading Paper

The type of paper you choose affects the way your printout looks, so be sure to select the correct paper for your job. For the best results, you’ll want to use one of Epson’s special ink jet papers designed for your printer. For guidelines, see page 12.

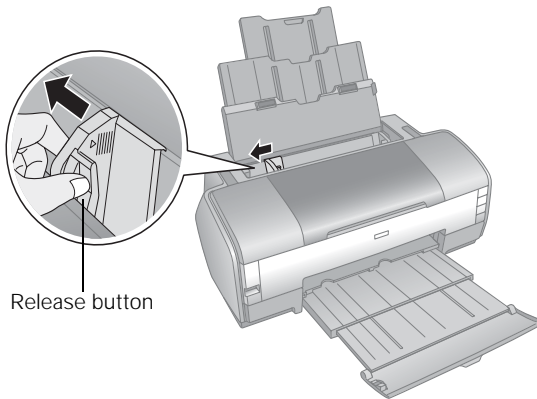
1. Open the paper support and slide out its extensions.



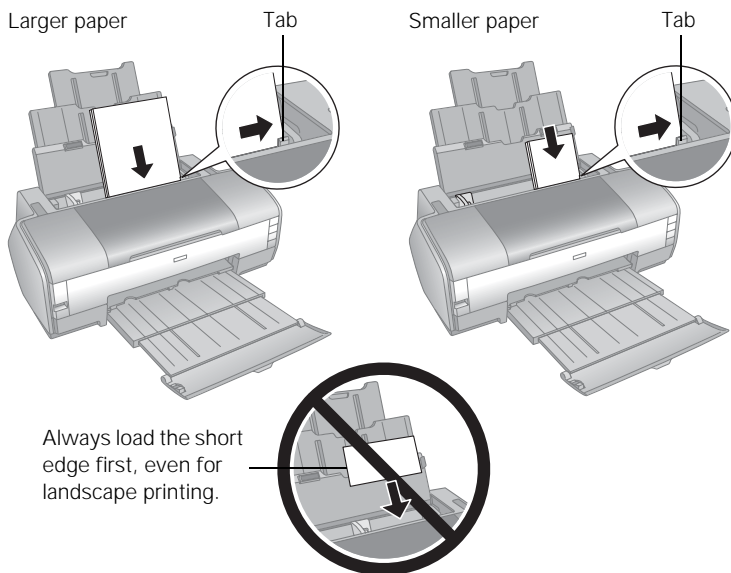
2. Open the front flap, then pull out the output tray and its extension.



3. Press in the release button on the left edge guide and slide the guide to the left.

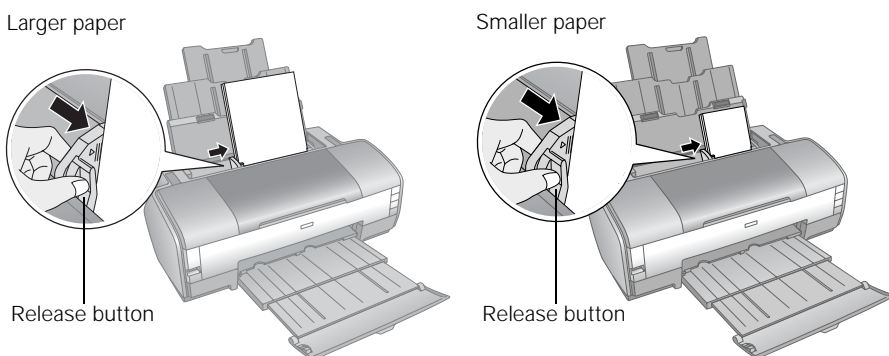


4. Insert the paper, printable side up, against the right edge guide and behind the tab. The printable side is usually whiter or glossier than the other side.



You can load about 120 sheets of plain paper. (See page 15 for capacity guidelines on special paper, such as photo or matte paper.)

5. Press in the release button on the left edge guide and slide the guide against the left edge of the paper (but not too tightly).



**Note:**

The left edge guide moves slightly during paper handling and printing. Do not adjust the guide if it moves.

Follow these guidelines when loading paper:

- Don't load paper above the arrow mark on the left edge guide. Make sure the paper is under the tabs on the left and right edge guides.
- Load the printable side face-up. It's often glossier or whiter than the other side.
- Always load the short edge first, even when printing in landscape mode.
- Load letterhead or preprinted paper into the printer top edge first.
- If you experience paper feeding problems, try loading fewer sheets.
- If you're using special paper, check the package for additional instructions on loading and using the paper.

## ***Special Papers***

You can achieve good results with most types of plain bond paper. Coated papers, however, provide superior printouts because they absorb less ink. Epson provides special papers that are formulated for the ink used in Epson ink jet printers and recommends these papers to ensure high-quality results.

### **Note:**

When you use special paper, check the package for special instructions on loading and using the paper.

### **Caution:**

If your Epson® special paper includes a cleaning sheet, don't use it with this printer; the sheet may jam inside your printer.

Epson offers the following special papers for the Epson Stylus Photo 1400:

Paper name	Size	Part number	Sheet count
Epson Ultra Premium Photo Paper Glossy	Borderless 4 × 6 inches	S042181 S042174	60 100
	Borderless 5 × 7 inches	S041945	20
	Borderless 8 × 10 inches	S041946	20
	Letter (8.5 × 11 inches)	S042182 S042175	25 50
Epson Premium Photo Paper Semi-gloss	Borderless 4 × 6 inches	S041982	40
	Letter (8.5 × 11 inches)	S041331	20
	Super B (13 × 19 inches)	S041327	20
Epson Premium Photo Paper Glossy	Borderless 4 × 6 inches	S041808 S041727	40 100
	Borderless 5 × 7 inches	S041464	20
	Borderless 8 × 10 inches	S041465	20
	Letter (8.5 × 11 inches)	S042183 S041667	25 50
	Borderless 11 × 14 inches	S041466	20
	US B (11 × 17 inches)	S041290	20
	A3 (11.7 × 16.5 inches)	S041288	20
	Super B (13 × 19 inches)	S041289	20
Epson Photo Paper Glossy	Borderless 4 × 6 inches	S041809 S042038	50 100
	Letter (8.5 × 11 inches)	S041141 S041649 S041271	20 50 100
	US B (11 × 17 inches)	S041156	20
	Super B (13 × 19 inches)	S041143	20

Paper name	Size	Part number	Sheet count
Epson Bright White Paper	Letter (8.5 × 11 inches)	S041586	500
Epson Premium Presentation Paper Matte	Borderless 8 × 10 inches	S041467	50
	Letter (8.5 × 11 inches)	S041257	50
		S042180	100
	Borderless 11 × 14 inches	S041468	50
	A3 (11.7 × 16.5 inches)	S041260	50
	Super B (13 × 19 inches)	S041263	50
Epson Premium Presentation Paper Matte Double-sided	Letter (8.5 × 11 inches)	S041568	50
Epson Ultra Premium Presentation Paper Matte	Letter (8.5 × 11 inches)	S041341	50
	A3 (11.7 × 16.5 inches)	S041343	50
	Super B (13 × 19 inches)	S041339	50
Epson Presentation Paper Matte	Letter (8.5 × 11 inches)	S041062	100
	Legal (8.5 × 14 inches)	S041067	100
	US B (11 × 17 inches)	S041070	100
	Super B (13 × 19 inches)	S041069	100
Epson Ultra Premium Photo Paper Luster	Letter (8.5 × 11 inches)	S041405	50
	A3 (11.7 × 16.5 inches)	S041406	50
	Super B (13 × 19 inches)	S041407	50
		S041604	
Epson Iron-on Cool Peel Transfer Paper	Letter (8.5 × 11 inches)	S041153	10
Epson Photo Quality Self-Adhesive Sheets	A4 (8.3 × 11.7 inches)	S041106	10

You can purchase genuine Epson ink and paper at Epson Supplies Central<sup>SM</sup> at **[www.epson.com/ink3](http://www.epson.com/ink3)** (U.S. sales) or **[www.epson.ca](http://www.epson.ca)** (Canadian sales). You can also purchase supplies from an Epson authorized reseller. To find the nearest one, call 800-GO-EPSON (800-463-7766) or visit Epson's website.

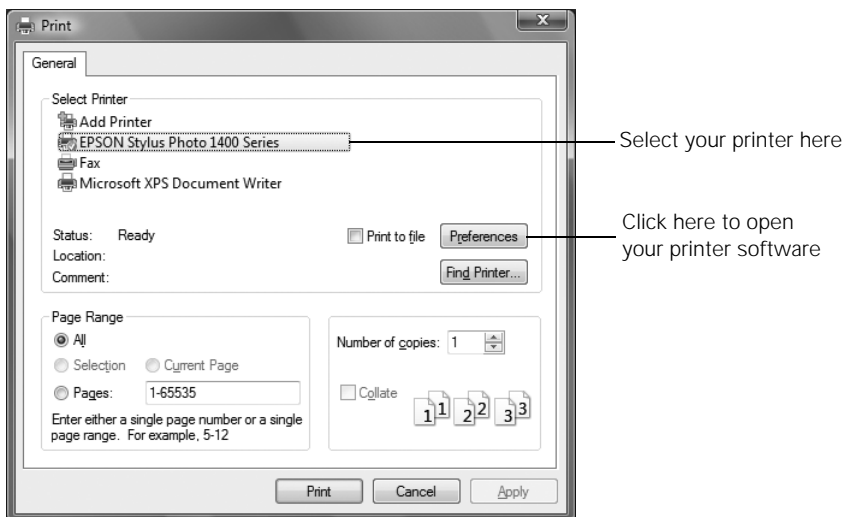
When loading Epson special papers, follow these capacity guidelines:

Paper name	Loading capacity
Epson Presentation Paper Matte	A3 or larger sizes: 50 sheets Smaller sizes: 100 sheets
Epson Bright White Paper	80 sheets
Epson Ultra Premium Photo Paper Glossy	20 sheets
Epson Premium Photo Paper Glossy Epson Premium Photo Paper Semi-gloss Epson Photo Paper Glossy Epson Ultra Premium Presentation Paper Matte Epson Premium Presentation Paper Matte Epson Ultra Premium Photo Paper Luster	A3 or larger sizes: 10 sheets Smaller sizes: 20 sheets
Epson Premium Presentation Paper Matte Double-sided Epson Iron-on Cool Peel Transfer Paper Epson Photo Quality Self-Adhesive Sheets	One sheet

# Printing with Windows

Follow the instructions in this section to print a basic document or photo. For instructions on printing borderless photos, see page 28. For more advanced printing instructions, see your on-screen *Reference Guide*.

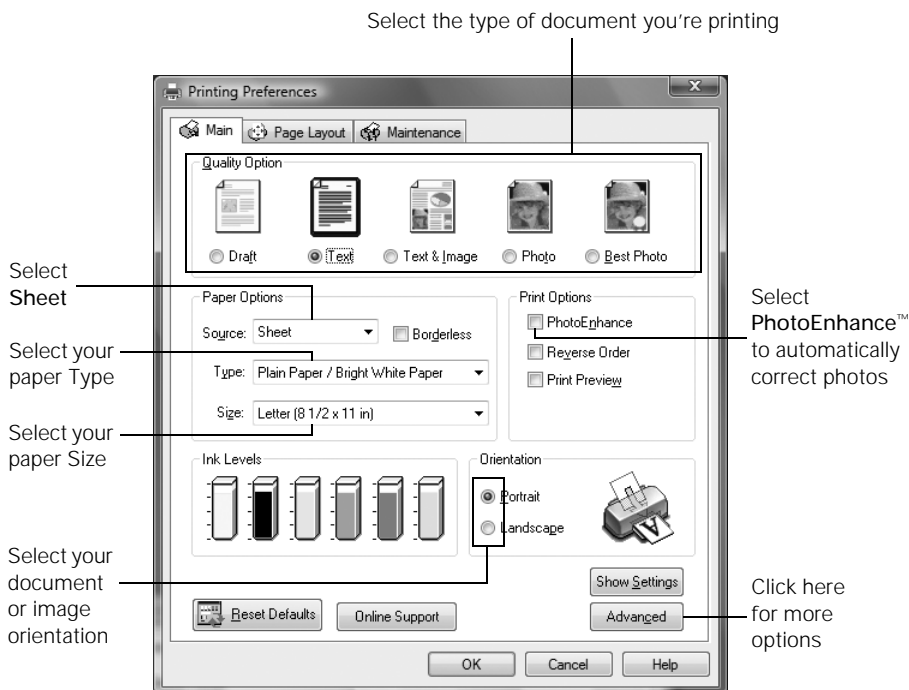
1. Open the File menu and select Print. You see a print window like this one:



2. Make sure EPSON Stylus Photo 1400 Series is selected.
3. Click the Properties or Preferences button. (If you see a Setup, Printer, or Options button, click it. Then click Properties or Preferences on the next screen.)



4. On the Main tab, select the basic print settings:



Select from these Quality Option settings:

Draft: For rough drafts with reduced print quality

Text: For text-only documents with higher text quality

Text & Image: For documents with text and images with higher quality

Photo: For photos and graphics with good quality and speed

Best Photo: For photos or graphics with high print quality

5. Select Sheet as the Source setting.
6. Make sure the paper Type and Size settings match the paper you've loaded in the printer. See "Selecting the Correct Paper Type" on page 27.
7. Select the direction you want your image or document to print as the Orientation setting. Select Portrait for vertical orientation or Landscape for horizontal.
8. Select PhotoEnhance to automatically correct your photos.

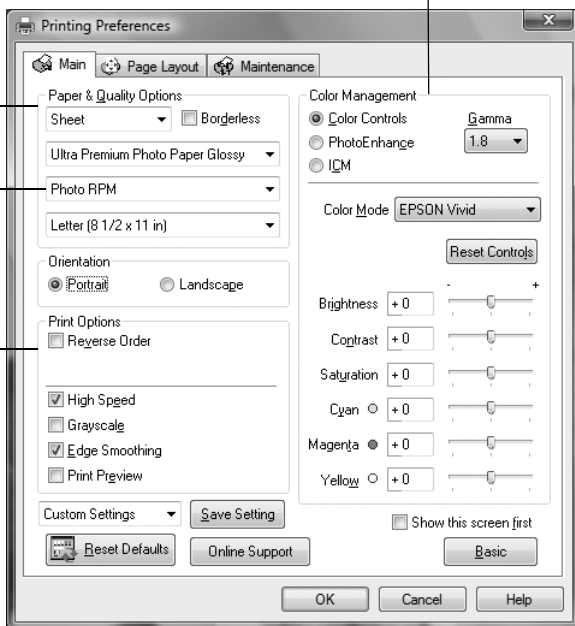
9. For more printing options, click the **Advanced** button. Then select the following settings as necessary.

Select a color management method  
(To choose **No Color Adjustment**, click ICM first)

Select Paper & Quality Options as necessary

Select **Photo RPM** for the best print quality on certain paper types

Select Print Options as necessary



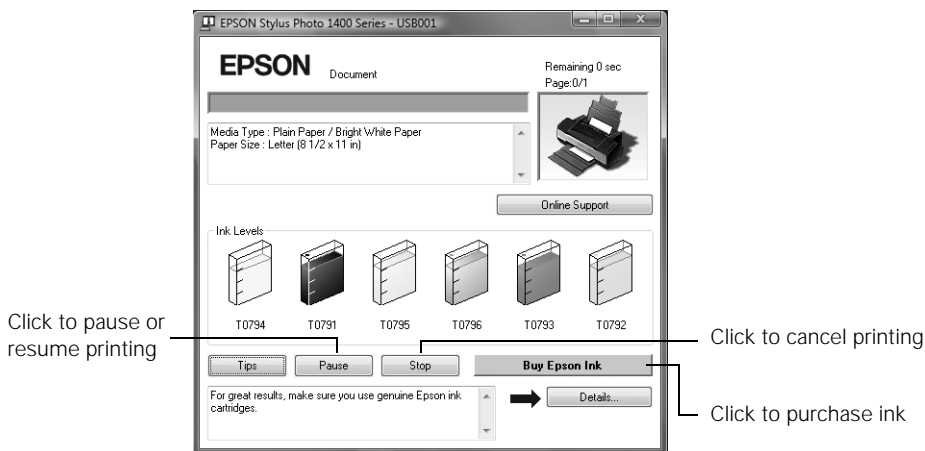
**Note:**

When you select **Photo RPM** for the highest print quality, printing will take longer.

For more information about advanced settings, or instructions on saving them as a group so you can reuse them later, click the **Help** button or click the ? button and then click on the area you need help with.

10. If you want to change the layout settings, click the **Page Layout** tab and select settings as necessary.
11. Click **OK** to save your settings, then click **OK** or **Print** to start printing.

During printing, the following window appears and shows the progress of your print job. You can use these buttons to cancel, pause, or resume printing. You can also see an estimate of your ink levels.




**Tip:**

You can also press the  paper button on your printer to cancel printing.

## Selecting Default Settings

When you change the printer settings within a program, they only apply to that program. If you want to change the default printer settings for all your Windows programs, follow these steps:

1. Right-click the  printer icon in the lower right corner of your screen (taskbar).
2. Select Printer Settings.
3. Select the default settings you want for all your applications, then click OK.

You can still change the printer settings in your individual programs, when necessary.

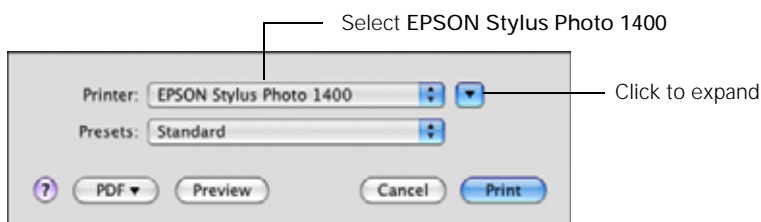
---

# Printing with a Macintosh

Follow the instructions below for your Mac OS operating system to print a basic document or photo. For instructions on printing borderless photos, see page 28. For more advanced printing instructions, see your on-screen *Reference Guide*.

## Mac OS X 10.5

1. Open a photo or document in an application.
2. Open the File menu and select Print.
3. Select EPSON Stylus Photo 1400 as the Printer setting.

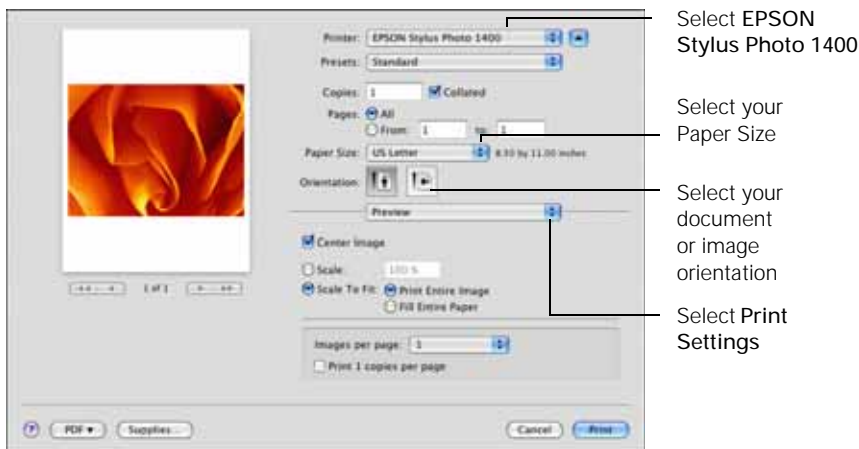


4. Click ▼ to expand the Print window, if necessary.

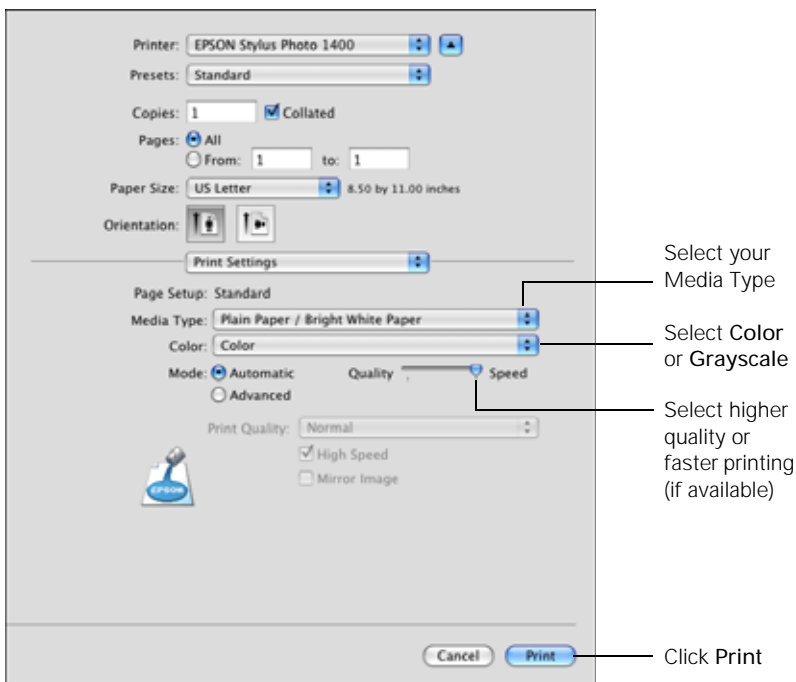
5. Select the basic page setup options. For borderless photos, choose a Paper Size setting with a Borderless option.

**Note:**


If the setting you want isn't shown (for example, **Scale**), check for it in your application before printing. Or check for it in the settings for your application at the bottom of this window. (If you're printing from Preview, you see the settings shown below.)

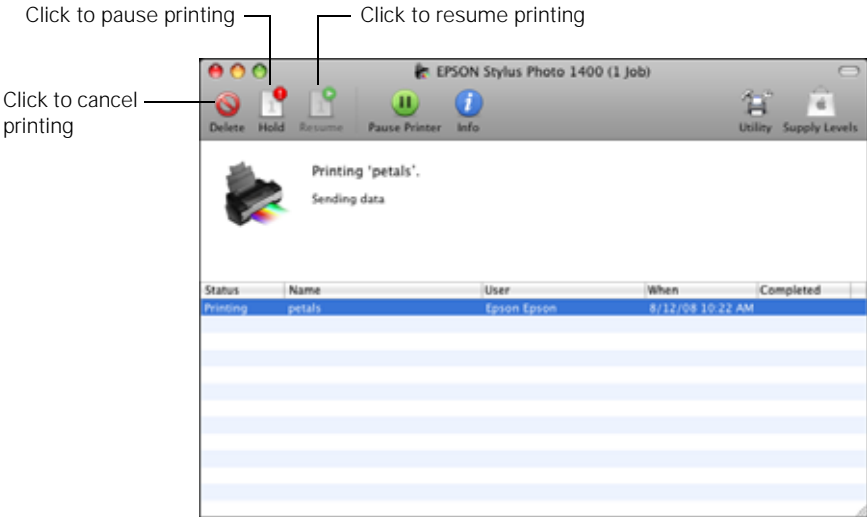


6. Choose Print Settings from the pop-up menu, then select the following print settings:



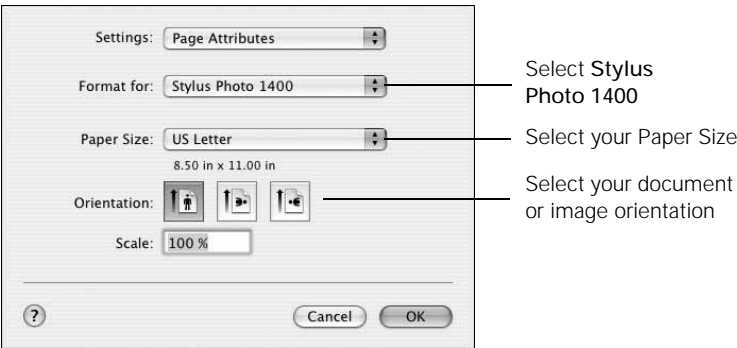
7. Choose any other printing options you may need from the pop-up menu. See the on-screen *Reference Guide* for details.
8. Click Print.

9. To monitor your print job, click the  icon in the dock. Select your print job, then select an option to cancel, pause, or resume printing, if necessary.





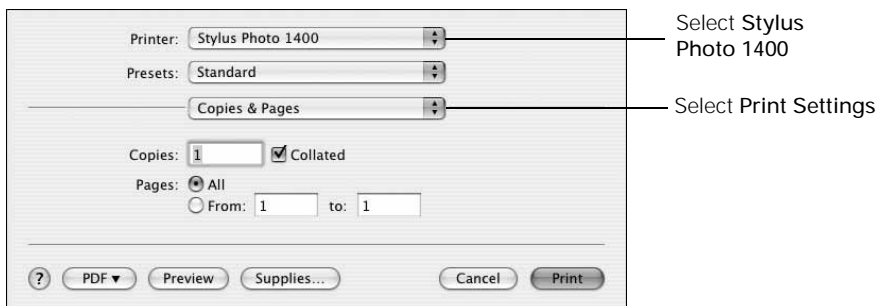
## Mac OS X 10.3 and 10.4

1. Open a photo or document in an application.
2. Open the File menu and select Page Setup. You see the Page Setup window:

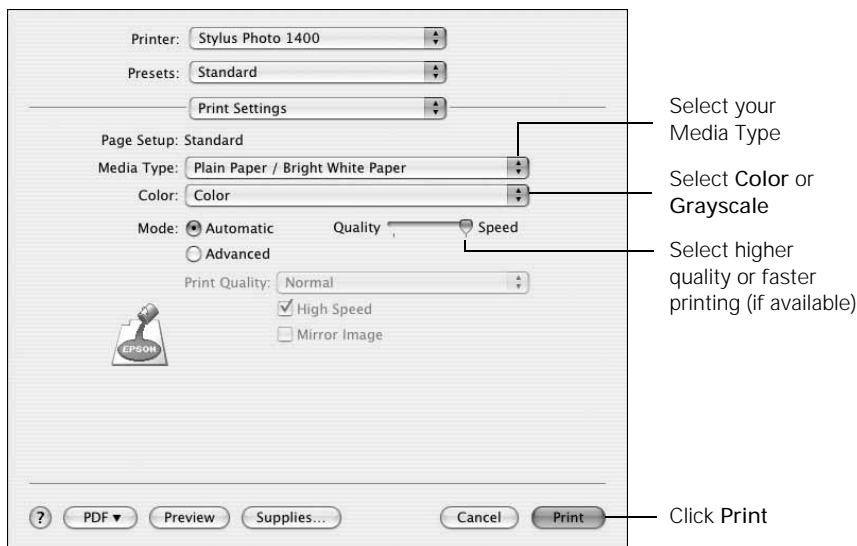


3. Select Stylus Photo 1400 from the Format for pop-up menu.
4. Select your Paper Size. For borderless printing, select a paper size with the Sheet Feeder - Borderless option. See page 28 for details.

5. Select  portrait or  landscape as the Orientation setting.
6. Click OK.
7. Open the File menu and select Print. You see a window like this one:



8. Select Stylus Photo 1400 from the Printer pop-up menu.
9. Select Print Settings from the pop-up menu, then select the following settings as necessary:

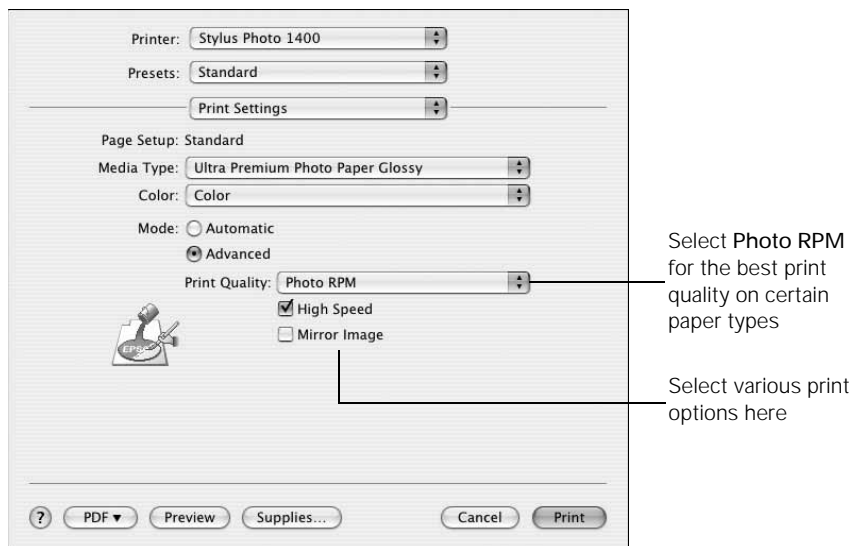


**Note:**

For more information about printer settings, click the ? button. In certain programs, you may need to select **Advanced** before you can select **Print Settings**.





10. Choose any other options you may need from the pop-up menu. See the on-screen *Reference Guide* for details.
11. Click the Advanced button and select the following settings as necessary. (For more information on Advanced settings, click ?.)

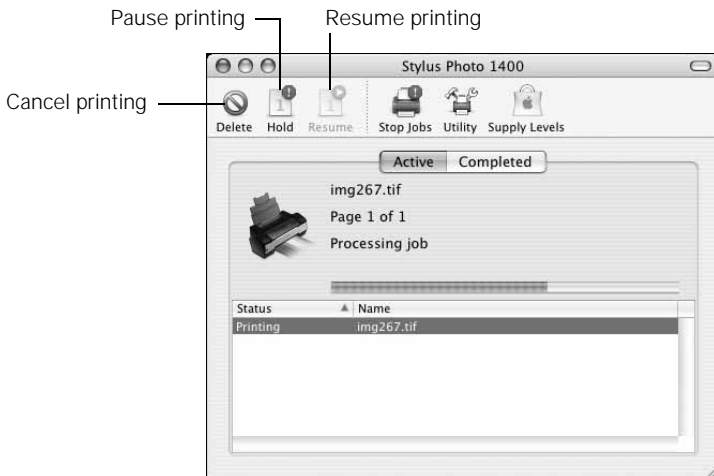


**Note:**

When you select **Photo RPM** for the highest quality, printing will take longer.

12. Click Print.
  13. To monitor the progress of your print job, click the  printer icon when it appears in the dock on the bottom of your desktop.
- If you're using Mac OS X 10.2.8, click the  Print Center icon instead, then double-click Stylus Photo 1400 in the Printer List window.

The following window appears and shows the progress of your print job. If necessary, you can click the print job to select it, then use these buttons to cancel, pause, or resume printing.



**Tip:**

You can also press the  paper button on your printer to cancel printing.

14. When you're finished, close the printer window or Print Center.

# Selecting the Correct Paper Type

Select the correct paper Type or Media Type setting so your printer knows what kind of paper you're using and adjusts the ink coverage accordingly.

For this paper	Select this paper Type or Media Type setting
Plain paper Epson Bright White Paper Epson Iron-on Cool Peel Transfer paper	Plain Paper / Bright White Paper
Epson Ultra Premium Photo Paper Glossy	Ultra Premium Photo Paper Glossy
Epson Premium Photo Paper Glossy	Premium Photo Paper Glossy
Epson Photo Paper Glossy	Photo Paper Glossy
Epson Presentation Paper Matte Epson Photo Quality Self Adhesive Sheets	Presentation Paper Matte
Epson Premium Photo Paper Semi-gloss	Premium Photo Paper Semi-Gloss
Epson Ultra Premium Photo Paper Luster	Ultra Premium Photo Paper Luster
Epson Ultra Premium Presentation Paper Matte	Ultra Premium Presentation Matte
Epson Premium Presentation Paper Matte Epson Premium Presentation Paper Matte Double-sided	Premium Presentation Paper Matte
Envelopes	Envelope

# Printing Borderless Photos

You can print your photos with no margins, extending the image all the way to the edges of the page. Although borderless printing is a bit slower, you get beautiful snapshots and enlargements, without trimming. You can print borderless photos on these papers and sizes:

Paper name	Sizes	Paper Type or Media Type setting
Epson Ultra Premium Photo Paper Glossy	4 × 6 inches 5 × 7 inches 8 × 10 inches Letter (8.5 × 11 inches)	Ultra Premium Photo Paper Glossy
Epson Premium Photo Paper Glossy	4 × 6 inches 5 × 7 inches 8 × 10 inches Letter (8.5 × 11 inches) 11 × 14 inches US B (11 × 17 inches) A3 (11.7 × 16.5 inches) Super B (13 × 19 inches)	Premium Photo Paper Glossy
Epson Photo Paper Glossy	4 × 6 inches Letter (8.5 × 11 inches) US B (11 × 17 inches) Super B (13 × 19 inches)	Photo Paper Glossy
Epson Presentation Paper Matte	Letter (8.5 × 11 inches) US B (11 × 17 inches) Super B (13 × 19 inches)	Presentation Paper Matte
Epson Premium Photo Paper Semi-gloss	4 × 6 inches Letter (8.5 × 11 inches) Super B (13 × 19 inches)	Premium Photo Paper Semi-Gloss
Epson Ultra Premium Photo Paper Luster	Letter (8.5 × 11 inches) A3 (11.7 × 16.5 inches) Super B (13 × 19 inches)	Ultra Premium Photo Paper Luster

Paper name	Sizes	Paper Type or Media Type setting
Epson Ultra Premium Presentation Paper Matte	Letter (8.5 × 11 inches) A3 (11.7 × 16.5 inches) Super B (13 × 19 inches)	Ultra Premium Presentation Matte
Epson Premium Presentation Paper Matte	8 × 10 inches Letter (8.5 × 11 inches) 11 × 14 inches A3 (11.7 × 16.5 inches) Super B (13 × 19 inches)	Premium Presentation Paper Matte

See these sections for instructions on selecting printer settings:

- “Borderless Printing with Windows” below
- “Borderless Printing with a Macintosh” on page 32
- “Storing and Displaying Your Prints” on page 34

## ***Borderless Printing with Windows***

These instructions cover printing from the Windows XP Picture and Fax Viewer, but you can print borderless photos using these driver setting instructions from any Windows application.


1. Locate the photo you want to print on your computer.
2. Right-click the photo, highlight **Open With**, and select **Windows Picture and Fax Viewer**.

### **Note:**

In Windows Vista®, you can select a photo on your system and click **Print**. Then select your printer, paper size, and type on the next screen. To select the rest of your print options, click **Options** at the bottom of the screen and select **Printer Properties**. Then continue with step 7 to select the necessary options.

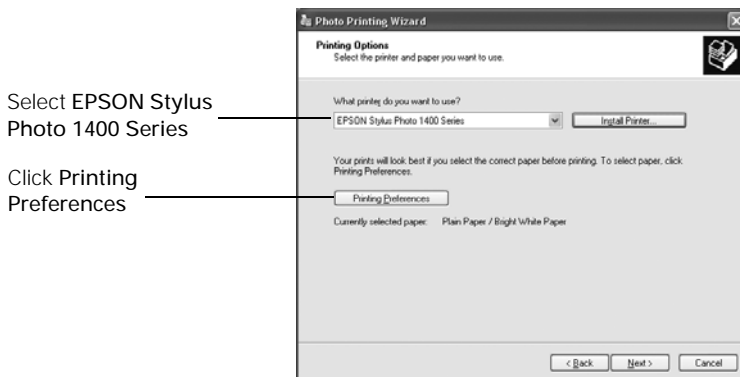


Print icon

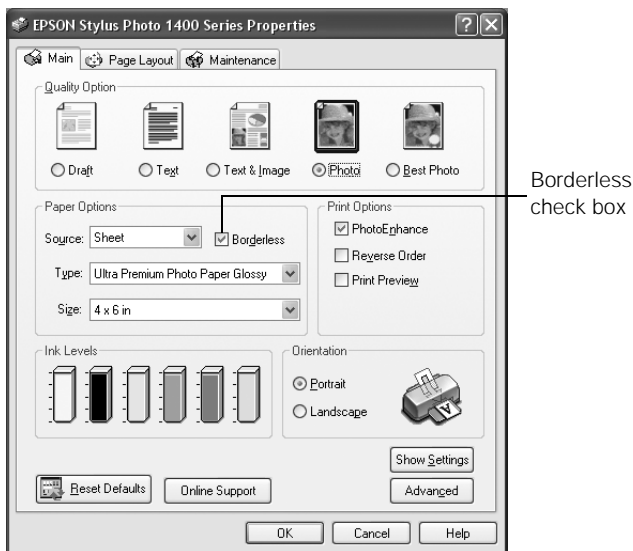
3. Click the  Print icon at the bottom of the screen.
4. Click Next. You see a Picture Selection window:



5. Select the photo(s) you want to print and click Next. You see the Printing Options window:



6. Select EPSON Stylus Photo 1400 Series and click Printing Preferences. You see the printer settings window:



7. Select Photo or Best Photo as the Quality Option setting.
8. Select one of the following for the paper Type option, to match the paper you're using:
- Ultra Premium Photo Paper Glossy
  - Premium Photo Paper Glossy
  - Photo Paper Glossy
  - Presentation Paper Matte
  - Premium Photo Paper Semi-Gloss
  - Ultra Premium Photo Paper Luster
  - Ultra Premium Presentation Matte
  - Premium Presentation Paper Matte

**Note:**

If you're not sure which Type to select, see the table on page 28.

9. Click the Borderless check box. Read the message and click OK.
10. Select your paper Size setting to match the paper you're using. See the list of supported borderless sizes beginning on page 28.

11. Select Portrait or Landscape as the Orientation setting.

**Note:**

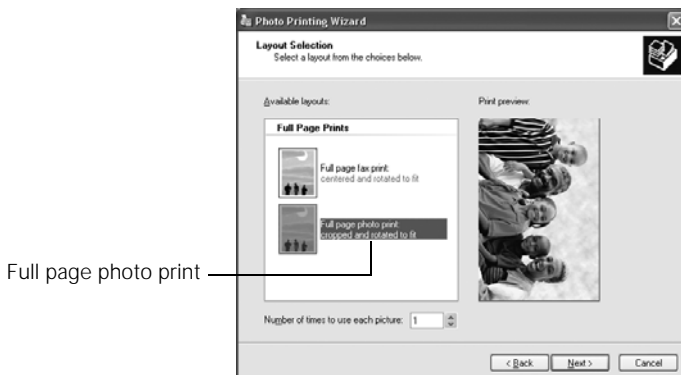
If you need to adjust the amount of image expansion necessary for borderless printing, click the **Page Layout** tab and adjust the **Expansion** slider.

12. Click OK.

**Note:**

In Windows Vista, follow the on-screen instructions.

13. Click Next. You see a Layout Selection window:





14. Select Full page photo print and click Next to begin printing.

## ***Borderless Printing with a Macintosh***

1. Open the photo you want to print in a printing application.
2. In OS X 10.3 and 10.4, open the File menu and select Page Setup. Select Stylus Photo 1400 from the Format for pop-up menu. Then select a borderless Paper Size setting to match the paper you're using. See the list of supported borderless sizes on page 28.



Select  portrait or  landscape as the Orientation setting and click OK.



3. Open the File menu and select Print.
4. Select EPSON Stylus Photo 1400 (or Stylus Photo 1400) in the Printer pop-up menu.
5. In OS X 10.5, select your page options and application settings as necessary. Choose a borderless paper size to match the paper you're using.
6. Select Print Settings from the pop-up menu.

**Note:**

In certain programs you may need to select **Advanced** before you can select **Print Settings**.

The automatic photo correction feature is not available with Macintosh.

7. Select one of the following Media Types to match the paper you're using:

- Ultra Premium Photo Paper Glossy
- Premium Photo Paper Glossy
- Photo Paper Glossy
- Presentation Paper Matte
- Premium Photo Paper Semi-Gloss
- Ultra Premium Photo Paper Luster
- Ultra Premium Presentation Matte
- Premium Presentation Paper Matte

**Note:**

If you're not sure which Media Type to select, see the table on page 28.

8. Select **Quality** (for higher quality) or **Speed** (for faster printing) using the slider, if it is available.

**Note:**

If you need to adjust the amount of image expansion necessary for borderless printing, select **Expansion** from the pop-up menu and adjust the **Expansion** slider.

9. Choose any other printing options you may need from the pop-up menu.
10. Click **Print** to start printing.

## ***Storing and Displaying Your Prints***

The special Epson Claria inks designed for your printer provide the ultimate combination of photo quality and longevity when printed on Epson papers and properly displayed or stored. For best results, always use Epson papers.

With proper care, photographs from your Epson Stylus Photo 1400 will last for many years. As with traditional photos, Epson recommends proper care that will minimize color changes and lengthen display life:

- Frame prints under glass or a protective plastic sleeve to protect them from atmospheric contaminants like humidity, smoke, and high levels of ozone.
- As with all photographs, keep your prints away from direct sunlight.
- Keep your prints away from high temperatures.
- For proper storage, keep your prints in a photo album or plastic photo storage box in acid-free, archival sleeves commonly available from most camera stores.
- Always keep unused paper in the original package.

---

## **Printing on CDs and DVDs**

Your printer includes a special tray that lets you print customized text, graphics, and photos directly on any ink jet-printable CD or DVD. The Epson Print CD software makes it easy to import your own photos, add text, and modify your designs with a variety of special effects. You can print on both regular 12-cm and 8-cm mini CDs and DVDs.

### **Caution:**

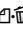
Use only ink jet-printable CDs and DVDs for printing. Thermal-printable and regular CDs and DVDs should not be used with this printer; otherwise the ink may smear.

Follow the steps in these sections to print on CDs or DVDs:

- “Cleaning the Rollers” on page 35
- “Inserting a CD or DVD” on page 35
- “Designing and Printing a CD/DVD with Windows” on page 37
- “Designing and Printing a CD/DVD with a Macintosh” on page 41

## ***Cleaning the Rollers***

Before you print on CDs or DVDs, you need to clean the rollers inside your printer. You can do this by feeding and ejecting several sheets of plain paper.

1. Make sure your printer is turned on and several sheets of letter-size paper are loaded.
2. Press the  paper button to feed a sheet of paper through the printer.
3. Repeat step 2 several times.

## ***Inserting a CD or DVD***

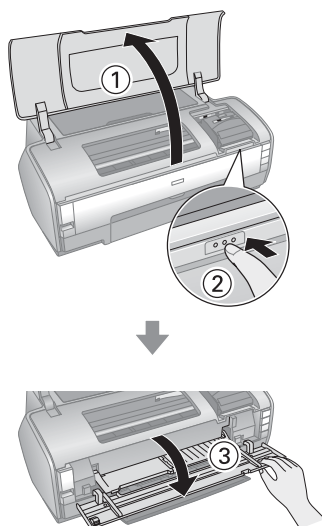
Make sure the data, music, or video is burned on your ink jet-printable CDs or DVDs before you print. Otherwise, dirt or scratches on the surface may cause errors when you burn the data.

1. Turn on your printer.

**Note:**

Before you insert a CD or DVD, make sure the printer is turned on. Otherwise, the disc may not be positioned correctly. Then follow these steps:

2. Remove any paper from the sheet feeder.
3. If the output tray is open, push it all the way in.
4. Lift up the printer cover, then press and release the front cover as shown to open the CD/DVD tray guide.
5. Close the printer cover.

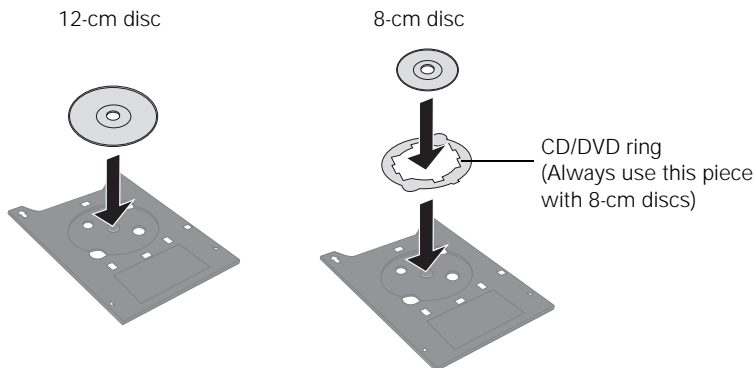


6. Place the CD or DVD on the CD/DVD tray with the white or printable side face-up. Make sure the disc lies flat in the tray.

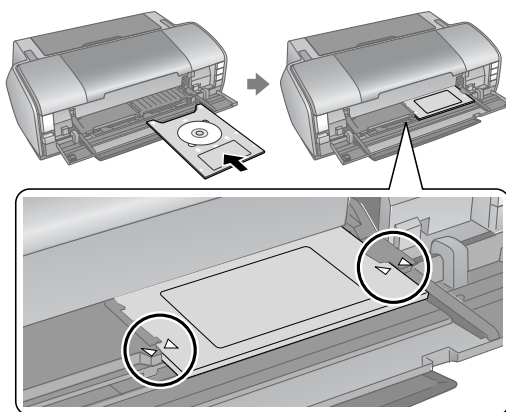
To print on a small CD or DVD (8-cm), place the small CD/DVD ring on the tray first, then place the CD or DVD inside the ring.

**Caution:**

Make sure you always use the small CD/DVD ring when printing on 8-cm CDs or DVDs and that the disc and ring lie flat on the tray; otherwise the printer may be damaged.



7. Slide the tray into the CD/DVD guide. Push in the tray until the arrows on the tray and the tray guide are aligned, as shown below.




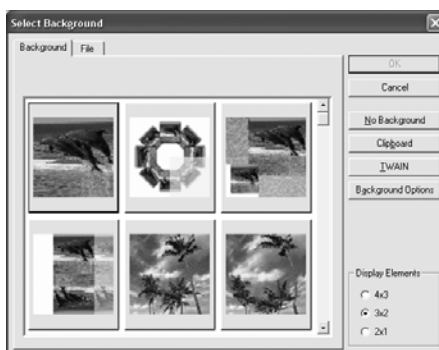
8. Follow the instructions on page 37 (Windows) or page 41 (Macintosh) to design and print with Epson Print CD.

# *Designing and Printing a CD/DVD with Windows*

You can use Epson Print CD to create and print a disc design with images, graphics, and text.

## *Designing a CD/DVD with Windows*


1. Double-click the EPSON Print CD icon on your desktop.
2. To add a background image, click the  background icon. You see a window like this:

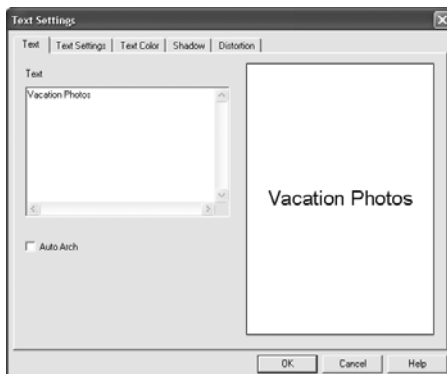


### **Note:**

If you have already chosen a background, you see a different screen. Click **Select Image**.

3. Do one of the following:
  - To select one of the background images provided with Epson Print CD, click the **Background** tab, select the image, and click **OK**.
  - To select one of your own images, click the **File** tab, click **Browse** to locate your image folder, then click **OK**. You see thumbnail images of all the files in the folder. Select your image and click **OK**.

- To add text, click the  button. Enter your text and use the tabs to apply formatting and special effects, then click OK. (To open the window again, double-click any block of text.)



- To curve a single line of text, click the text in the main window and drag the red “handle” up or down. Then adjust it using the other handles that appear.
- When you’re finished, choose Save as from the File menu to save your file.

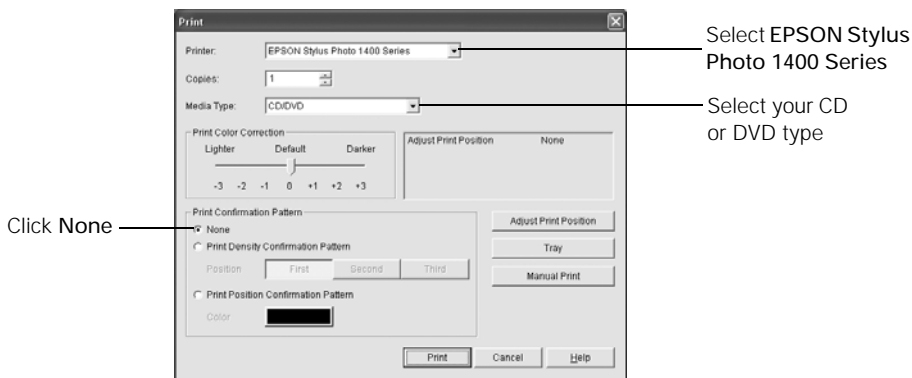
**Note:**

For additional help with Epson Print CD, open the **Help** menu in Epson Print CD and select **Help Topics**.

## ***Printing on a CD/DVD with Windows***

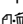
After you have created your design and loaded a CD or DVD, you’re ready to print.

- Open the File menu and select Print.



2. Make sure EPSON Stylus Photo 1400 Series is selected.
3. Select CD/DVD or CD/DVD Premium Surface as the Media Type setting.
4. Select None as the Print Confirmation Pattern setting.
5. Click Print.

**Note:**

When you set the copies setting to 2 or more, remove each CD or DVD from the tray after it has been printed, and then place the next disc on the tray (see page 35). Press the  paper button to resume printing.

After you print, handle the CD or DVD carefully. To allow the ink to dry, wait at least 24 hours before playing the disc or inserting it in a drive. Keep printed discs away from moisture and direct sunlight.

**Note:**

If printing on a full face (hub-printable) disc, you may need to adjust the print position to maximize the print area.

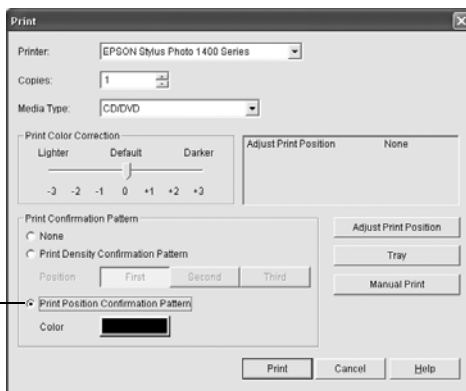
If you need to adjust the print position or color, see the next section or page 40.

## ***Adjusting the Print Position with Windows***

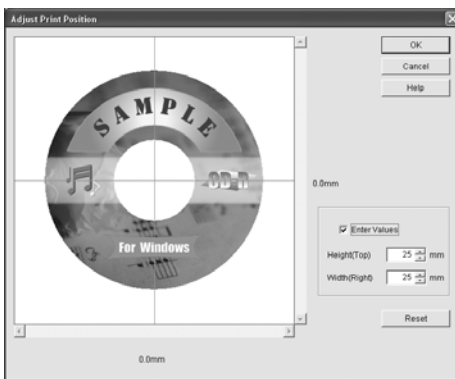
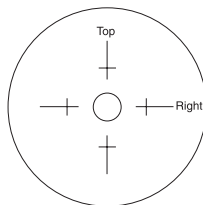
If your printed images and text are not centered or positioned the way you want on your CD or DVD, you may need to adjust the printing position. You can also use these steps to check the position before you print on a CD or DVD.

1. Place an extra ink-jet printable CD or DVD on the CD/DVD tray and insert it into the printer, as described on page 35.
2. Start Epson Print CD.
3. Open the File menu and select Print.

Click Print Position Confirmation Pattern



4. Make sure EPSON Stylus Photo 1400 Series is selected, then click Print Position Confirmation Pattern.
5. Click Print. The confirmation pattern is printed on the CD or DVD.
6. Remove the CD or DVD and measure the distance from the edge of the hole to the small cross marks labeled Top and Right. You'll need a metric ruler with millimeters for accurate measurements.
7. Open the File menu, select Print, then select Adjust Print Position. You see a screen like this:
8. Click Enter Values, then input the Top distance (from your measurement) in the Height (Top) box. Enter the Right distance (from your measurement) in the Width (Right) box.
9. Click OK to save the measurements.



## ***Adjusting the Print Density with Windows***

If ink smears on your printed CDs or DVDs, you may need to adjust the color saturation or ink density. CDs and DVDs from different manufacturers may absorb ink differently, so you may need to adjust the density for each type of disc. Follow these instructions to print a color saturation check pattern, and then make adjustments as necessary.

1. Place an extra ink-jet printable CD or DVD on the CD/DVD tray and insert it into the printer, as described on page 35.
2. Start Epson Print CD.
3. Open the File menu and select Print.
4. Make sure EPSON Stylus Photo 1400 Series is selected, then click Print Density Confirmation Pattern.
5. Click Print.



6. After the pattern is printed, examine the print.

If you need to adjust the color, make the Print Color Correction setting lighter or darker as necessary. Then repeat these steps, but select either Second or Third as the Print Density Confirmation Pattern Position setting to print your second or third pattern on the disc.

**Note:**

You can print three density patterns on one disc. Each pattern is printed in a different location.

7. Remove the CD or DVD and let it dry for at least 24 hours. Then check the saturation levels again.


**Note:**

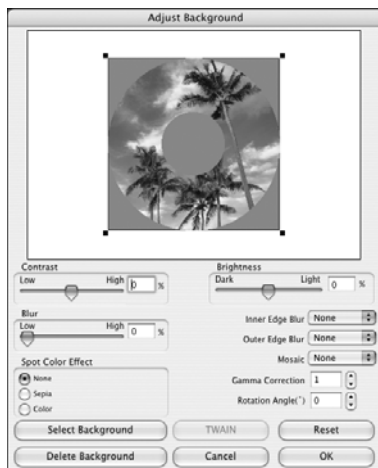
You can also use the Brightness and Contrast settings in Epson Print CD to adjust color saturation. For additional information, open the **Help** menu in Epson Print CD and select **Help Topics**.

## ***Designing and Printing a CD/DVD with a Macintosh***

You can use Epson Print CD to create and print a disc design with images, graphics, and text.

### ***Designing a CD/DVD with a Macintosh***

1. Open the Applications folder, open the EPSON Print CD folder, then select EPSON Print CD.
2. To add a background image, click the  background icon. You see the following window:
3. To select a background image, click **Select Background**, locate the folder your images are stored in, select the one you want, then click **Open**.
4. Click **OK** in the **Adjust Background** window.



5. To add text, click the **T** button. In the Text Settings window, type your text, then use any of the options in the window to format it. You can also use options in the Color Settings and Object Settings windows.



6. To curve a single line of text, click the text in the main window and drag the red “handle” up or down. Then adjust it using the other handles that appear.
7. When you’re finished, choose Save as from the File menu to save your file.

**Note:**

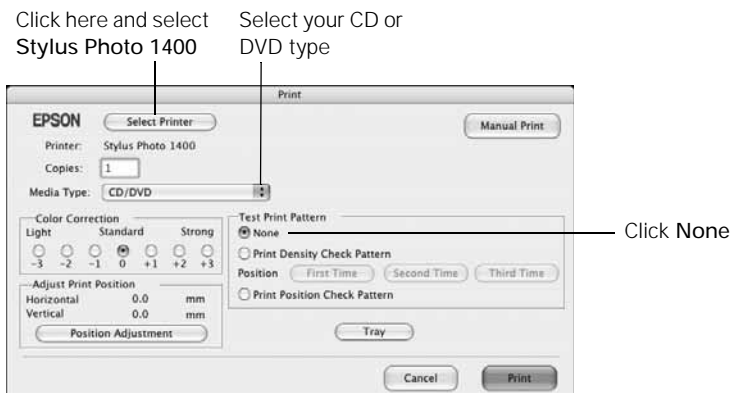
For additional help with Epson Print CD, open the **Help** menu in Epson Print CD and select EPSON Print CD Help.

## ***Printing on a CD/DVD with a Macintosh***

After you have created your design and loaded a CD or DVD, you’re ready to print.

1. Open the File menu and select Print.
2. Click the Select Printer button and select EPSON Stylus Photo 1400 or Stylus Photo 1400 from the printer list, then click OK.
3. Select CD/DVD or CD/DVD Premium Surface as the Media Type setting.
4. Select None as the Test Print Pattern setting.

## 5. Click Print.



### Note:

When you set the copies setting to 2 or more, remove each CD or DVD from the tray after it has been printed, and then place the next disc on the tray (see page 35). Press the paper button to resume printing.

After you print, handle the CD or DVD carefully. To allow the ink to dry, wait at least 24 hours before playing the disc or inserting it in a drive. Keep printed discs away from moisture and direct sunlight.

### Note:

If printing on a full face (hub-printable) disc, you may need to adjust the print position to maximize the print area.

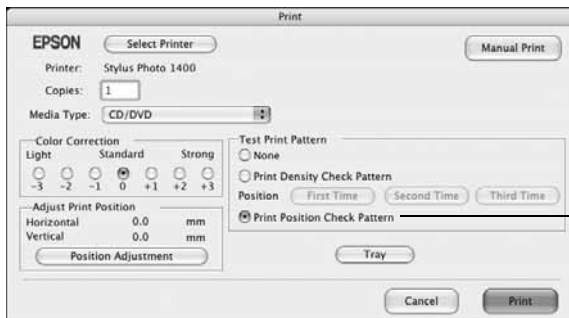
If you need to adjust the print position or color, see the next section or page 45.

## ***Adjusting the Print Position with a Macintosh***

If your printed images and text are not centered or positioned the way you want, you may need to adjust the printing position. You can also use these steps to check the position before you print on a CD or DVD.

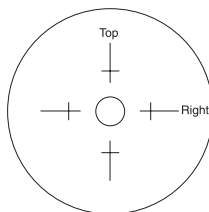
1. Place an extra ink jet-printable CD or DVD on the CD/DVD tray and insert it into the printer, as described on page 35.
2. Start Epson Print CD.

- Open the File menu and select Print.

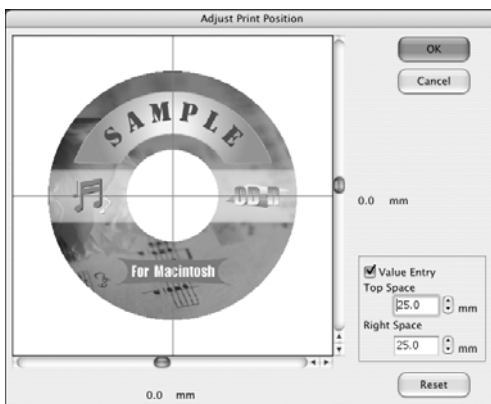


Click Print Position Check Pattern

- Make sure EPSON Stylus Photo 1400 or Stylus Photo 1400 is selected, then click Print Position Check Pattern.
- Click Print. The confirmation pattern is printed on the CD or DVD.
- Remove the CD or DVD and measure the distance from the edge of the hole to the small cross marks labeled Top and Right. You'll need a metric ruler with millimeters for accurate measurements.



- Open the File menu, select Print, then select Position Adjustment. You see a screen like this:
- Click Value Entry, then input the Top distance (from your measurement) in the Top Space box. Enter the Right distance (from your measurement) in the Right Space box.
- Click OK to save the measurements.



## ***Adjusting the Print Density with a Macintosh***

If ink smears on your printed CDs or DVDs, you may need to adjust the color saturation or ink density. CDs and DVDs from different manufacturers may absorb ink differently, so you may need to adjust the density for each type of disc. Follow these instructions to print a color saturation check pattern, and then make adjustments as necessary.

1. Place an extra ink jet-printable CD or DVD on the CD/DVD tray and insert it into the printer, as described on page 35.
2. Start Epson Print CD.
3. Open the File menu and select Print.
4. Make sure Stylus Photo 1400 is selected, then click Print Density Check Pattern.
5. Click Print.
6. After the pattern is printed, examine the print.

If you need to adjust the color, make the Color Correction setting lighter or darker as necessary. Then repeat these steps, but select either Second Time or Third Time as the Print Density Check Pattern Position setting to print your second or third pattern on the disc.

**Note:**

You can print three density patterns on one disc. Each pattern is printed in a different location.

7. Remove the CD or DVD and let it dry for at least 24 hours. Then check the saturation levels again.

**Note:**

You can also use the Brightness and Contrast settings in Epson Print CD to adjust color saturation. For additional information, open the **Help** menu in Epson Print CD and select EPSON Print CD Help.


---

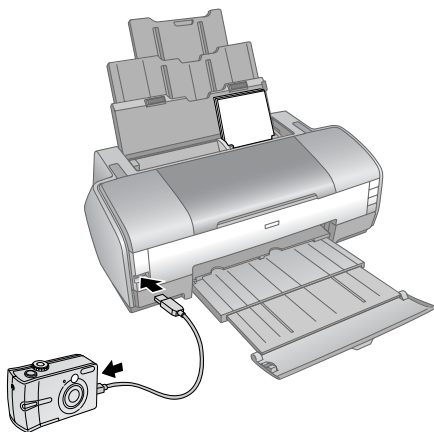
# Direct Printing from a Digital Camera or Camera Phone

You can connect a digital camera or camera phone that supports PictBridge or USB Direct-Print printing to the Epson Stylus Photo 1400 and use the camera or phone to control printing of your photos. (A cable may not be included with your camera or phone.)

Check your camera or phone manual to see if it supports PictBridge or USB Direct-Print. If it doesn't, the red  $\triangle$  ink and  $\square$  paper lights flash alternately when you connect your camera or phone. Epson cannot guarantee the compatibility of any cameras or phones.

The file format of your images must be JPEG, and the size of each image must be at least  $80 \times 80$  pixels but not more than  $9200 \times 9200$  pixels.

1. Make sure your Epson Stylus Photo 1400 is turned on, but not printing.
2. Load the type of paper you want to use. See page 9.
3. Connect the USB cable that came with your camera or phone to the  PictBridge port on the front of the printer.
4. Connect the other end of the cable to your camera or phone.
5. Turn on your camera or phone.
6. Use your camera or phone to select the photos you want to print, adjust any necessary settings, and print your photos. See your camera or phone manual for details.



# Maintaining Your Printer

Follow the steps in these sections to keep your Epson Stylus Photo 1400 in great shape and transport it, if necessary.


- “Checking the Print Head Nozzles” below
- “Cleaning the Print Head” on page 48
- “Replacing an Ink Cartridge” on page 50
- “Aligning the Print Head” on page 57
- “Cleaning the Printer” on page 58
- “Transporting the Printer” on page 59

---

## Checking the Print Head Nozzles

You can run a nozzle check to see if the print head needs cleaning. Follow the instructions below.

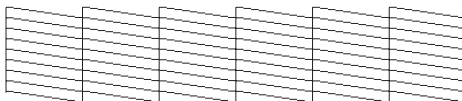
Before you check the print head nozzles, make sure the CD/DVD tray is not inserted in the printer.

1. Make sure the printer is turned on but not printing, and the red  $\triangle$  ink light is not on. (If the red  $\triangle$  ink light is on, you need to replace a cartridge; see page 50 for details.)
2. Make sure letter-size plain paper is loaded in the printer.
3. **Windows:** Right-click the  printer icon on your taskbar (in the lower right corner of your screen). Select Nozzle Check.

**Macintosh:** Open the Applications folder and select EPSON Printer Utility3. Select SP 1400 Series in the printer list, click OK, and select Nozzle Check.

4. Follow the instructions on the screen to print the nozzle check pattern.

Print head does  
not need to be  
cleaned:



Print head needs  
to be cleaned:



5. If there are no gaps or lines, click Finish.

If there are gaps or lines, or the test patterns are faint, click Clean and follow the on-screen instructions to clean the print head.

---

## Cleaning the Print Head

If your printouts are unexpectedly light or dots or lines are missing, you may need to clean the print head. This unclogs the nozzles so they can deliver ink properly. Print head cleaning uses ink, so clean it only if quality declines.

### Note:

Before you clean the print head, check the print head nozzles first to confirm that the print head needs to be cleaned. This saves ink. For more information, see page 47.


This section explains how to clean the print head using the Head Cleaning Utility. You can also clean the print head by holding down the  $\triangle$  ink button on the printer for three seconds. (This only works when the red  $\triangle$  ink light is off.)

Before you clean the print head, make sure the CD/DVD tray is not inserted in the printer.

### Caution:

When you don't turn on your printer for a long time, print quality can decline, so turn it on and print a few pages at least once a month to maintain the best print quality.



1. Make sure the printer is turned on but not printing, and the red  $\triangle$  ink light is off. (If the red  $\triangle$  ink light is flashing or on, you need to replace a cartridge; see page 50 for details.)
2. Do one of the following:
  - **Windows:** Right-click the  printer icon on your taskbar (in the lower right corner of your screen). Select Head Cleaning.
  - **Macintosh:** Open the Applications folder and select EPSON Printer Utility3. Select SP 1400 Series in the printer list, click OK, then select Head Cleaning.
3. Follow the instructions on the screen to clean the print head.

The printer cleans the print head and the green  $\odot$  power light flashes. Cleaning takes about two minutes.

**Caution:**

Never turn off the printer while head cleaning is in progress. You may damage it.

4. When the green  $\odot$  power light stops flashing, make sure paper is loaded in the printer, click Print Nozzle Check Pattern, then click Print.

The nozzle check pattern prints.

Print head does not need to be cleaned:



Print head needs to be cleaned:



5. If there are no gaps or lines, click Finish.

If there are gaps or lines, or the test patterns are faint, click Clean and follow the on-screen instructions to clean the print head again.

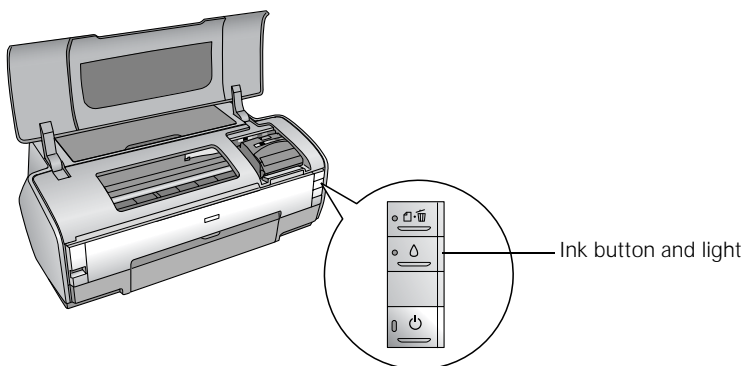
If you don't see any improvement after cleaning four times, turn the printer off and wait at least 6 hours. This allows any dried ink to soften. Then, try cleaning the print head again.

If you still don't see any improvement, refer to "Problems and Solutions" on page 64.

# Replacing an Ink Cartridge

When the red ◊ ink light flashes, one or more ink cartridges are low on ink.

When the red ◊ ink light stays on, you need to replace one or more cartridges.




You'll also see a message on your screen when you print telling you which cartridge is low or expended.

When a cartridge is more than six months old, you may need to replace it if printouts don't look their best. If the quality doesn't improve after cleaning and aligning the print head, you can replace the cartridge even if the red ◊ ink light is off.

## Checking the Ink Status

To check the ink status, do one of the following:

- **Windows:** Double-click the  printer icon on your taskbar (in the lower right corner of your screen). You see a window like this one:

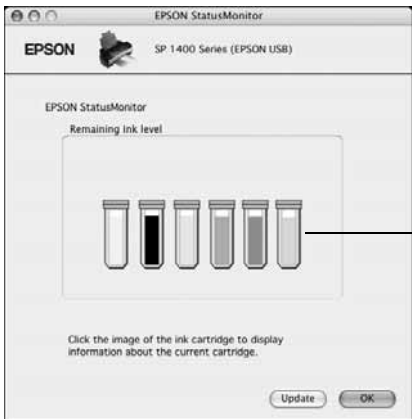
### Note:

To see the part numbers for the ink cartridges currently installed in your printer, click **Information**.



Click here to display information about your cartridges

- **Macintosh:** Open the Applications folder and select EPSON Printer Utility3. Select SP 1400 Series in the printer list, click OK, then select EPSON StatusMonitor. You see a window like this one:



Click a cartridge image to display information about it.

## Purchasing Ink Cartridges

Use these Epson ink cartridges within six months of installing them and before the expiration date on the package:

Ink cartridge	Part number
Black	79 (T079120)
Cyan	79 (T079220)
Magenta	79 (T079320)
Yellow	79 (T079420)
Light Cyan	79 (T079520)
Light Magenta	79 (T079620)

### Caution:

To ensure the best results, use genuine Epson ink cartridges and do not refill them. Other products may cause damage to your printer not covered by Epson's warranty.

You can purchase genuine Epson ink and paper at Epson Supplies Central at [www.epson.com/ink3](http://www.epson.com/ink3) (U.S. sales) or [www.epson.ca](http://www.epson.ca) (Canadian sales). You can also purchase supplies from an Epson authorized reseller. To find the nearest one, call 800-GO-EPSON (800-463-7766).

# ***Ink Cartridge Precautions***

## **Warning:**

Keep ink cartridges out of the reach of children and do not drink the ink.

Be careful when you handle used ink cartridges; there may be ink remaining around the ink supply port. If ink gets on your skin, wash it off with soap and water. If it gets in your eyes, flush them immediately with water.

## **Caution:**

After bringing an ink cartridge inside from a cold storage site, allow it to warm up at room temperature for at least three hours before using it.

Do not use an ink cartridge beyond the date printed on the package. For best results, use up the ink cartridges within six months of first installing them.

Do not shake ink cartridges after opening their packages; this can cause leakage.

Do not remove or tear any label or seal on the cartridge other than the yellow tab; this can cause leakage.

Do not touch the green IC chip on the side of the cartridge. Doing so may prevent normal operation and printing.

Install an ink cartridge immediately after you remove it from its package. Leaving the cartridge unpacked for a long time before using it can result in reduced print quality.

If you remove an ink cartridge for later use, protect the ink supply area from dirt and dust, and store it in the same environment as the printer. A valve in the ink supply port makes covers or plugs unnecessary, but the ink may stain items that come into contact with this area of the cartridge. Do not touch the ink supply port or the surrounding area.

Do not dismantle ink cartridges or try to refill them. This could damage the print head.

Store ink cartridges with their labels facing upward. Do not store cartridges upside down.

Store ink cartridges in a cool, dark place.

## **Note:**

You cannot continue printing with one ink cartridge expended, even if the other cartridges still contain ink. Before printing, replace the expended cartridge.

The IC chip on these ink cartridges retains a variety of cartridge related information, such as the ink cartridge status, so that the cartridge may be removed and reinserted freely. However, each time the cartridge is inserted, some ink is consumed because the printer automatically performs a reliability check.

If you remove a cartridge that is low (for which you have received an "Ink low" message), you cannot reuse it.

## Removing and Installing Ink Cartridges




Be sure you have a new ink cartridge before you begin. Once you start replacing a cartridge, you must complete all the steps in one session.

### Caution:


Leave the expended cartridge installed until you have obtained a replacement, or the ink remaining in the print head nozzles may dry out.


To ensure good results, use genuine Epson ink cartridges and do not refill them. Other products may cause damage to your printer not covered by Epson's warranty.

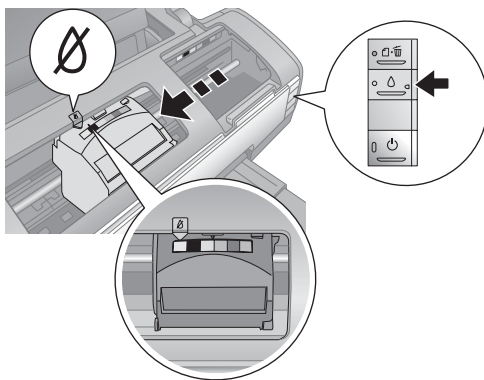
Do not open ink cartridge packages until you are ready to install the ink. Cartridges are vacuum packed to maintain reliability.

1. Make sure the CD/DVD tray is not inserted in the printer.
2. Make sure the printer is turned on, but the green  power light is not flashing.
3. Open the printer cover.
4. Press the  ink button. The  power light begins to flash.

### Caution:

Don't hold down the  ink button for more than 3 seconds or the printer will start to clean the print head.

If one of the cartridges is low or expended, the print head moves that cartridge to the  mark. Go to step 5.



If no cartridges are low or expended, the cartridge holder moves directly to the ink cartridge replacement position. Go to step 6.

**Caution:**

To avoid damaging the printer, never move the print head by hand.

Do not touch the area shown below when you are changing ink cartridges.

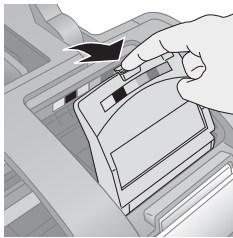


5. Press the  $\triangle$  ink button again.

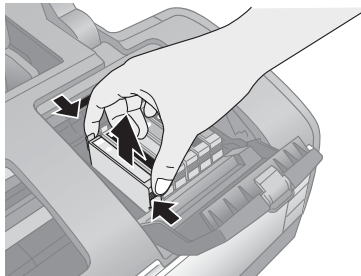
If more than one cartridge is low or expended, the next low or expended cartridge moves to the  $\times$  mark. Press the  $\triangle$  ink button to continue checking the cartridges.

After the printer identifies all the low or expended ink cartridges, the print head moves to the ink cartridge replacement position.

6. Open the cartridge cover.



7. Squeeze the tab at the back of the cartridge and lift it straight out. Dispose of it carefully. Don't take the used cartridge apart or try to refill it.

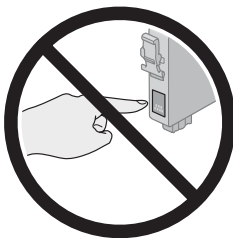
**Warning:**

If ink gets on your hands, wash them thoroughly with soap and water. If ink gets in your eyes, flush them immediately with water.

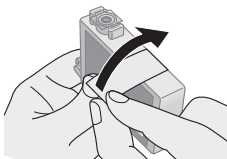
8. Remove the new cartridge from its package.

**Caution:**

Do not touch the green IC chip on the side of the cartridge. Doing so may prevent normal operation and printing.



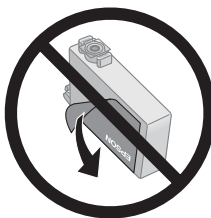
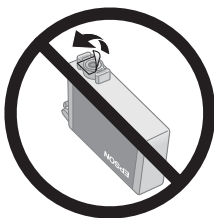
9. Remove the yellow tape from the bottom of the ink cartridge.



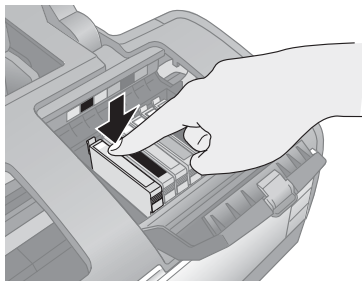
**Caution:**

You must remove the yellow tape from the cartridge before you install it; otherwise, print quality may decline or you may not be able to print.

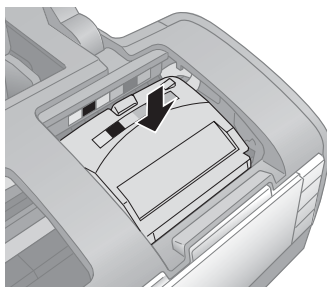
Don't remove any other seals from the cartridge; this can cause leakage.



10. Place the new ink cartridge into the cartridge holder and push it down until it clicks into place.



11. Replace any other cartridges that need to be replaced.
12. Close the cartridge cover.



13. Close the printer cover and press the  $\triangle$  ink button. The printer begins charging ink.

The green  $\odot$  power light flashes and the printer makes noise. Charging takes about two minutes. When it's finished, the green  $\odot$  power light stops flashing and stays on, and the red  $\triangle$  ink light goes out.

**Caution:**

Never turn off the printer while the green  $\odot$  power light is flashing, or you'll waste ink.

**Note:**

If the red  $\triangle$  ink light stays on, an ink cartridge may not be installed correctly. Open the printer cover and press the  $\triangle$  ink button two or more times. Then open the cartridge cover and press down all the cartridges until they click into place. Close the cartridge and printer covers, and press the  $\triangle$  ink button to charge the ink.



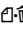
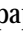

# Aligning the Print Head

If your printouts look grainy or blurry, or you see light or dark lines, you may need to align the print head.

**Note:**

You may also see lines in your printouts if your cartridges are low on ink or you need to clean the print head.

Before you align the print head, make sure the CD/DVD tray is not inserted in the printer.

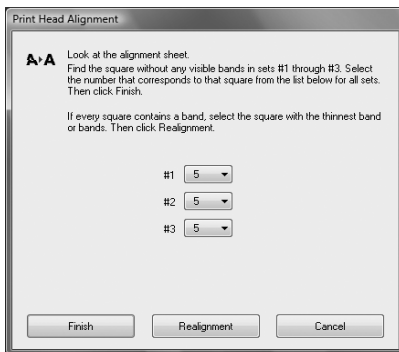
1. Turn on the printer.
2. Load several sheets of plain, letter-size paper.
3. Make sure the  paper and  ink lights are not flashing or on.
4. Do one of the following:
  - **Windows:** Right-click the  printer icon on your taskbar (in the lower right corner of your screen). Select Print Head Alignment.
  - **Macintosh:** Open the Applications folder and select EPSON Printer Utility3. Select SP 1400 Series in the printer list, click OK, then select Print Head Alignment.

5. Follow the instructions on the screen to print the alignment pattern. You see a window like this one:

**Note:**

Do not cancel printing while the alignment sheet is printing.

6. Look at the three sets of patterns in your printout. For each set, if you see a pattern with no streaks or lines, enter its number in the corresponding box on the screen.



If every pattern in a set contains lines or streaks, select the pattern that looks the best. Click Realignment, then click Print to print another alignment sheet and repeat this step.

7. Click Finish to exit the Print Head Alignment utility.

---

# Cleaning the Printer

To keep your printer working at its best, you should clean it several times a year.

1. Turn off the printer, unplug the power cord, and disconnect the USB cable.
2. Remove all the paper, then use a soft brush to clean the sheet feeder.
3. If the outer case or inside of the sheet feeder are dirty, clean them with a soft cloth dampened with mild detergent. Keep the printer cover closed to prevent water from getting inside.
4. If ink accidentally gets inside the printer, wipe it off with a damp cloth in the area shown.

**Warning:**

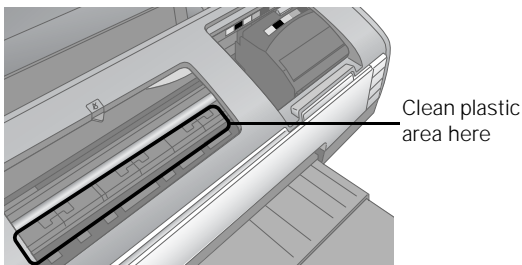
Don't touch the gears or any other parts inside the printer.

**Caution:**

Never use a hard or abrasive brush, or benzine, alcohol, or paint thinner for cleaning; they can damage the printer components and case.

Don't get water on the printer components and don't spray or apply lubricants, oils or grease inside the printer.

Don't use any cleaning sheets included with special paper; they may jam inside the printer.



---

# Transporting the Printer

If you need to ship your printer, you must prepare it for transportation by packing the printer in its original box or one of a similar size.

**Caution:**

Leave the ink cartridges installed. Removing the cartridges can dry out the print head and may prevent the printer from printing.

1. Turn off the printer.
2. Remove any paper from the sheet feeder and close the paper support.
3. Push in the output tray extensions and close the tray.
4. Unplug the power cord from the electrical outlet. Then disconnect the USB cable from the printer.
5. Repack the printer in the original box using the protective materials that came with it.

**Caution:**

During transport, do not tilt the printer, stand it up vertically, or turn it upside down, or ink may leak from the cartridges.

After transporting the printer, plug it in and turn it on. If you notice a decline in print quality, clean the print head (see page 48); if output is grainy or blurry, align the print head (see page 57).



# Solving Problems

If your Epson Stylus Photo 1400 has any problems, see these sections for solutions:

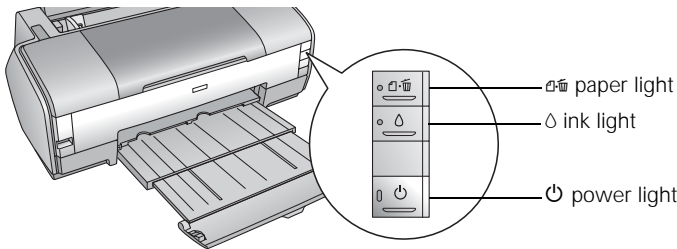
- “Diagnosing Printer Problems” below
- “Problems and Solutions” on page 64

If you need to uninstall and reinstall your software to solve a problem, see “Uninstalling Printer Software” on page 74.







If the solutions here don’t solve your problem, see “Where To Get Help” on page 75.

---

## Diagnosing Printer Problems



First, check the printer’s lights (see below) or run a printer check (see page 63).



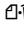

Lights	Explanation
Green  power light flashes	The printer is receiving a print job, replacing an ink cartridge, charging ink, or cleaning the print head, or a camera is connected to the  PictBridge port.
Red  paper light is on and green  power light flashes	If you’re printing on paper, your paper ran out or multiple pages have fed at once. Load or reload your paper, then press the  paper button to resume printing.  If you’re printing on a CD or DVD, the CD/DVD tray is not inserted. Follow the instructions beginning on page 35 to insert the tray, then press the  paper button.

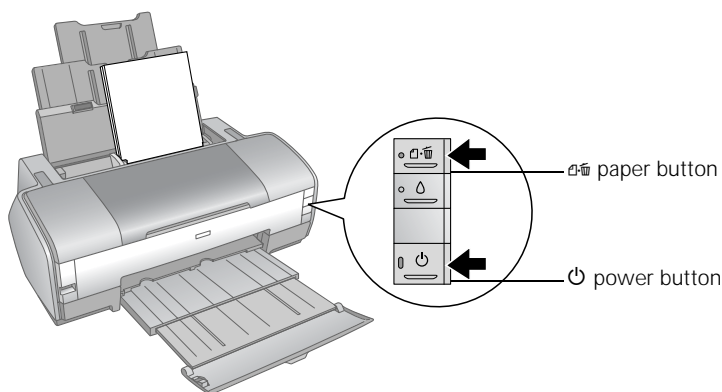
Lights	Explanation
Red 𐀀 paper light flashes and green 𐀁 power light flashes	<p>If you're printing on paper, it is jammed in the printer. Press the 𐀀 paper button to eject the paper. If that doesn't work, turn off the printer, open the cover, and pull the paper out from the front, including any torn pieces. Then turn on the printer, reload paper, and press the 𐀀 paper button.</p> <p>If you're printing on a CD or DVD, the CD/DVD tray has not ejected. Pull out the tray and press the 𐀀 paper button.</p>
Red 𐀂 ink light flashes	An ink cartridge is nearly expended. Check the message that appears on your screen to determine which cartridge is nearly expended or follow the instructions on page 50. Make sure you have a replacement cartridge.
Red 𐀂 ink light and green 𐀁 power light are on	<p>An ink cartridge is expended or not installed. Make sure you have a replacement cartridge, then follow the steps on page 50 to install it.</p> <p>If you have just installed a new cartridge, it may be incompatible with the printer or incorrectly installed. Reinstall it or replace it with the correct cartridge, as described on page 50.</p>
Red 𐀀 paper and red 𐀂 ink lights flash rapidly	Paper is loaded for printing, but the CD/DVD tray guide is open. If you want to print on paper, close the CD/DVD tray guide. If you want to print on a CD or DVD, remove the paper from the sheet feeder.
Green 𐀁 power light is on; red 𐀀 paper and red 𐀂 ink lights flash alternately	An unsupported device is connected to the 𐀃 PictBridge port. Only devices compatible with PictBridge or USB Direct-Print can be connected to this port. See page 46 for more information.
The 𐀁 power light is off; red 𐀀 paper and red 𐀂 ink lights flash	Paper may be blocking movement of the print head or the printer may have an internal error. Turn off the printer, then open the cover and remove any jammed paper or other foreign objects. Wait a few seconds, then turn the printer back on again. If the lights are still flashing, contact Epson as described on page 75.

## Running a Printer Check

You can run a printer check to determine whether a problem comes from the printer or some other source.

Before you run a printer check, make sure the CD/DVD tray is not inserted in the printer.

1. Turn off both the printer and computer. Then disconnect the USB cable from the printer.
2. Make sure letter-size plain paper is loaded in the printer.
3. Press the  paper and  power buttons together to turn on the printer. Continue holding down the  paper button until the green  power light starts to flash, then release it.



A test page prints showing the printer's ROM version number and a nozzle check pattern. (If the pattern has gaps, you need to clean the print head as described on page 48.)

4. Turn off the printer after it prints the test page. Then reconnect the USB cable and turn on your printer and computer.
  - If the test page prints, the problem probably lies in your software settings, the USB cable, or your computer, or your software may not be installed correctly. To uninstall and reinstall the software, see page 74.
  - If the test page doesn't print, you may have a problem with your printer. Try the suggestions in "Problems and Solutions" on page 64. If nothing works, contact Epson as described in "Where To Get Help" on page 75.

---


# Problems and Solutions

## Tip:


If you don't find the information you're looking for in this section, please check the on-screen *Reference Guide*.


## ***Setup and Software Installation Problems***

### Tip:

Periodically, it's a good idea to check Epson's support website at [epson.com/support](http://epson.com/support) for free updates to your Epson Stylus Photo 1400 printer software. Download instructions are posted for your convenience. With Windows, you can also click **Start** or , select **Programs** or **All Programs**, select **EPSON**, and click **EPSON Stylus Photo 1400 Series Driver Update** for printer driver updates.

### **The printer makes noise after ink cartridge installation.**

- The first time you install ink cartridges, the printer must charge its print head for three minutes or so. Wait until charging finishes (the green  power light stops flashing) before you turn off the printer, or it may charge improperly and use excess ink the next time you turn it on.

If the print head stops moving or the printer stops making noise, but the green  power light is still flashing after 5 minutes, turn off the printer. If the light is still flashing when you turn it back on, contact Epson as described in "Where To Get Help" on page 75.

- Turn off the printer, then make sure the ink cartridges are inserted completely and the ink cartridge cover is closed completely. Also make sure no packing material remains in the printer. Wait a moment, then turn the printer back on to clear the error.

### **You're having problems installing the printer software.**

- Carefully follow the installation instructions on the *Start Here* sheet. Do not connect your printer to the computer until you are instructed to do so and make sure the cable is securely connected. Also make sure your system meets the requirements shown on page 77.
- Close your other programs, including any screen savers and virus protection software, and install the software again.



- If you are using Mac OS X 10.3 or 10.4 and you do not see the printer name in the Format for menu on the Page Setup screen, you may need to set up your printer in the Printer Setup Utility or Print Center. See the *Start Here* sheet for instructions.
- If you're using Windows 2000 and you see an error message or your software doesn't install correctly, you may not have software installation privileges. Contact your System Administrator.
- Make sure Windows 2000 or XP was preinstalled on your system. The USB Printer Device Driver may not install correctly if you've upgraded from Windows 95.
- Make sure the USB Controller is working properly in Device Manager. See your Windows help system for details. If it's not working, contact your computer manufacturer.
- If you're printing on a network, see your on-screen *Reference Guide* for instructions on configuring your printer for use on a network.

## ***Printer Problems***

### **The printer is on, but nothing prints.**

- Make sure the USB cable is connected securely and that the cable meets the system requirements on page 77.
- Run a printer check as described on page 63. If the test page prints, make sure your software is installed correctly. You may need to uninstall and reinstall it as described on page 74.
- Make sure there is no packing material in the printer.
- If you're printing on a network, you need to set up your printer for network printing, as described in your on-screen *Reference Guide*.
- If you print continuously for an extended period, the paper may temporarily stop feeding or the print head carriage may pause for a while to prevent the printer mechanism from overheating and being damaged. If this happens, you can continue to print but Epson recommends that you stop and leave the printer on for about 30 minutes. After 30 minutes, turn the printer off and on and it should print at normal speed.

### **The printer sounds as though it is printing, but nothing prints.**

- If you're using Windows, make sure your printer is selected. If you're using a Macintosh, make sure your printer is selected in the Page Setup and Print windows.
- The print head nozzles may need cleaning; see page 48 for instructions.
- Make sure the printer software settings are appropriate for the paper size you're using.
- The printer won't operate properly if it's tilted or at an angle. Place it on a flat, stable surface that extends beyond the printer base in all directions.

### **Your printer makes noise when you turn it on or after it has been sitting for awhile.**

Your printer is performing routine maintenance.

### **Printing is too slow.**

Make sure your system meets the requirements listed on page 77. If you're printing a high-resolution image, you need more than the minimum requirements listed. You may also need to:

- Clear space on your hard drive or run a defragmentation utility.
- Close open programs that you're not using.
- Increase your system's memory (RAM).

For the fastest printing, try these tips:

- Set the Quality Option to Draft (Windows) or the Quality/Speed slider to Speed (Macintosh).
- If your printer is connected to a USB hub, disconnect USB devices that you're not using.

#### **Note:**

Borderless printing takes longer, especially near the edges of the paper.

## Print Quality Problems

### You see banding (light lines).

- The print head nozzles may need cleaning; see page 48 for instructions.
- Select a higher print quality and turn off High Speed mode; see page 17 (Windows) or page 24 (Macintosh) for instructions.
- Make sure the Type or Media Type setting matches the paper you loaded; see page 27 for guidelines.
- Make sure the printable side of the paper is face-up. It's usually brighter or whiter.
- The ink cartridges may need replacing; see page 50 for instructions.
- Make sure you're using genuine Epson ink cartridges and you use them within six months after you open the packages.
- If you have a Macintosh, try using Automatic mode; see page 20 for instructions.
- Align the print head; see page 57 for instructions.



### Your printout is blurry or smeared.

- Make sure your paper isn't damp or curled, or loaded face-down (the printable side should be face-up).
- Make sure your paper is not damaged, dirty, or too old.
- Make sure the Type or Media Type setting matches the paper you loaded; see page 27 for guidelines.
- Use a support sheet with special paper or load your paper one sheet at a time.
- Make sure your paper meets the specifications listed in the on-screen *Reference Guide*.
- Use Epson papers to ensure proper saturation and absorption of genuine Epson inks.



- Make sure you're using genuine Epson ink cartridges and you use them within six months after you open the packages.
- The printer won't operate properly if it's tilted or at an angle. Place it on a flat, stable surface that extends beyond the printer base in all directions.
- The print head nozzles may need cleaning; see page 48 for instructions.
- Align the print head; see page 57 for instructions.
- Remove each sheet from the output tray as it is printed.
- Avoid handling printouts for a few hours to allow the ink to set.
- If ink smears on the back of a printout, clean the inside of the printer; see page 58 for instructions.

### **Your printout is faint or has gaps.**

- The print head nozzles may need cleaning; see page 48 for instructions.
- The ink cartridges may be old or low on ink. To replace an ink cartridge, see page 50.
- Make sure the Type or Media Type setting matches the paper you loaded; see page 27 for guidelines.
- Make sure your paper isn't damaged, old, dirty, or loaded face-down. For best results, use genuine Epson paper.



### **Caution:**

Don't open Epson Status Monitor, pause printing, or respond to any ink messages when your printer is printing. This may cause your printer to pause and leave an uneven surface on your printout. If your ink is running low, wait until printing finishes before checking ink levels or attempting to replace a cartridge. If you must replace an ink cartridge in the middle of a print job, the quality of your printout may decline. For best results, check your ink levels and replace ink cartridges, if necessary, before printing large or high-resolution print jobs.

### **Your printout is grainy.**


- Make sure the printable side of the paper is face-up. It's usually brighter or whiter.
- Try using a higher quality paper or select a higher Quality Option or Print Quality setting; see page 17 (Windows) or page 24 (Macintosh) for instructions.
- Run the Print Head Alignment utility; see page 57 for instructions.
- You may need to increase the image resolution or print it in a smaller size; see your software documentation.

### **You see wrong or missing colors.**

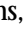

- Clear the Grayscale setting in your printer software (Windows) or change the ink setting in your printer software to Color (Macintosh).
- The print head nozzles may need cleaning; see page 48 for instructions.
- The ink cartridges may be old or low on ink; see page 50.
- If you're using Windows, try turning off PhotoEnhance.
- Try changing the Gamma setting; see your on-screen *Reference Guide* for more information.
- After you print, the colors on your printout will take some time to set as the ink dries. During this time, the colors may look different than you expect. To reduce the drying time, avoid stacking your prints on top of each other.
- Your printed colors can never exactly match your on-screen colors. However, you can use a color management system to get as close as possible. You can also use your printer's color management features. See your on-screen *Reference Guide* for more information.

## ***Problems with Paper Feeding***

### **Paper doesn't eject fully or is wrinkled.**

- If the paper doesn't eject fully, you may have set the wrong paper size. Press the  paper button to eject the paper, then select the correct paper size.
- If it's wrinkled when it ejects, the paper may be damp or too thin. Make sure your paper meets the specifications listed in the on-screen *Reference Guide*.

## **Paper doesn't feed correctly or jams in the printer.**

- Make sure the paper support extension is pulled up.
- If paper doesn't feed, remove it from the sheet feeder, reload it against the right edge, then slide the left edge guide against the paper.
- If multiple pages feed at once, remove the paper from the sheet feeder, fan the edges to separate the sheets, and carefully reload it.
- If paper jams, press the  paper button to clear the jam. If that doesn't work, turn off the printer, open the cover, and pull the paper out from the front, including any torn pieces. Then turn on the printer, reload paper, and press the  paper button.

If your paper loads incorrectly or jams frequently:

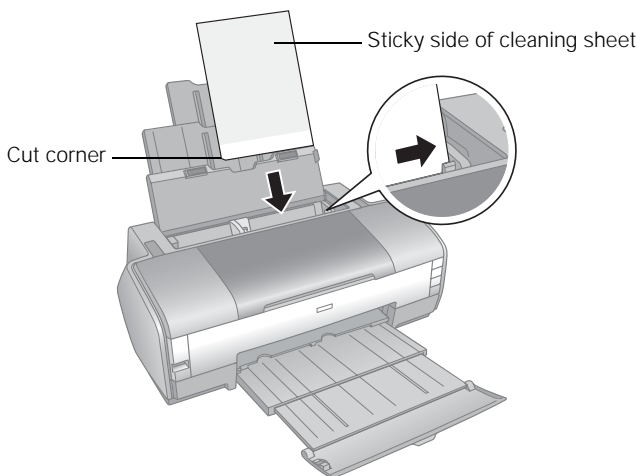
- Use new, smooth, high-quality paper, loaded printable side up. Make sure the paper is not curled, creased, wrinkled, too thin, or too old.
- Fan the edges of the stack of paper to separate the sheets.
- Don't load paper above the arrow mark on the left edge guide.
- Place the paper against the right edge behind the tab. Slide the left edge guide against it, but not too tightly.
- Store paper flat to prevent curling.
- Paper dust may have built up on the paper rollers. Use Epson Ink Jet Printer Cleaning Sheets (part number S041150) to clean the rollers as follows:
  1. Remove any paper loaded in the printer's sheet feeder.
  2. Remove the instruction sheet from the sticky side of the cleaning sheet.


### **Caution:**

Do not follow the loading instructions on the sheet; they are not correct for your printer. Follow the steps here instead.

Do not use the cleaning sheets that come with Epson special papers; they may jam inside your printer.

3. Position the cleaning sheet in the printer's sheet feeder with the cut corner in the lower left. Make sure the sticky side of the cleaning sheet is face-up.



4. Press the  paper button to feed the sheet through the printer.
5. When the sheet ejects, repeat steps 3 and 4 to feed the sheet through two more times. Then discard the cleaning sheet.

## ***CD/DVD Printing Problems***

### **Images and text are not centered on the CD/DVD.**

Adjust the print position as described on page 39 (Windows) or page 43 (Macintosh).

### **Ink smears on the CD/DVD or printing is too light.**

- Make sure you're using ink jet-printable CDs or DVDs.
- Handle the disc carefully and allow the ink to dry for at least 24 hours before playing the disc or inserting it in a drive.
- Adjust the print density as described on page 40 (Windows) or page 45 (Macintosh).
- Adjust the brightness or contrast. See the Epson Print CD on-screen help.


**Printed CDs or DVDs are dirty.**

Clean the rollers as described on page 35.

**The CD/DVD won't feed into the printer.**

Turn on your printer and gently insert the CD/DVD tray along the tray guide until the arrows on the CD/DVD tray and tray guide match each other. For more information, see page 35.

**The CD/DVD tray is ejected or not fed correctly when a print job is sent.**

- Reinsert the CD/DVD tray correctly; see page 35 for instructions.
- If the tray is ejected when you start a print job, the printer is not ready. Wait until you see a message on your screen asking you to insert the tray. Then reinsert the tray and press the  paper button.

## ***Miscellaneous Printout Problems***

**The image is inverted, as if viewed in a mirror.**

Turn off the Mirror Image setting in the printer software or your application program. (If you're printing on Epson Iron-on Cool Peel Transfer paper, the image *should* be inverted.)

**The printer prints blank pages.**

- If you're using Windows, make sure your printer is selected. If you're using a Macintosh, make sure your printer is selected in the Page Setup and Print windows.
- The print head nozzles may need cleaning; see page 48 for instructions.

**The margins are incorrect.**

- Make sure the paper settings are correct for your paper size. For instructions, see page 16 (Windows) or page 20 (Macintosh).
- Choose the correct margins for your paper size.
- If you're using a Macintosh, make sure you choose the same printer in the Page Setup window and the Print window.



- Use the Print Preview option in your printer software to check your margins before you print.
- Make sure the paper is positioned all the way to the right of the sheet feeder. Slide the left edge guide against the paper.

**The image size or position is incorrect.**

- Make sure the paper and layout options are set correctly. See page 16 (Windows) or page 20 (Macintosh) for instructions.
- Your images may not match the width/height proportions of the paper size or layout you're using, and may be cropped to fit.

**You see incorrect characters.**

- Make sure the USB cable is securely connected and meets the system requirements on page 77. Then try printing again.
- If you're using a switch box or USB hub with your printer, connect the printer directly to your computer instead.

**Too many copies are printing.**

Make sure that the Copies option in your printer software or program is not set for multiple copies.

**Output is not what you expect when printing borderless photos.**


- Make sure you are printing on paper that supports borderless printing. See the list of supported borderless paper types and sizes on page 28.
- Use the expansion setting to adjust how the image fits on the page. See "Printing Borderless Photos" on page 28.
- Don't choose a custom paper size setting when printing borderless photos.

---

# Uninstalling Printer Software

You may need to uninstall and then reinstall your printer driver and utilities. For example, this might be necessary when you upgrade your operating system. You don't need to uninstall Epson Print CD or your on-screen *Reference Guide*.

## *Windows*

1. Turn off the printer and disconnect its USB cable.
2. Click Start or , and select Programs or All Programs.
3. Point to Epson or Epson Printers, then select Epson Printer Software Uninstall.

With Windows Vista, when you see the User Account Control screen, click Continue.

4. In the next window, select EPSON Stylus Photo 1400 Series and click OK. Then follow the on-screen instructions.
5. Restart your computer, then see the *Start Here* sheet to reinstall your software.

## *Macintosh*

1. Insert the Epson printer software CD-ROM into your Macintosh.
2. Double-click the Epson CD-ROM icon on your desktop.
3. Open the English folder, then open the OSX folder.

**Note:**

You may have to scroll down to see these folders.

4. Double-click the Installer icon.
5. When the Installer window appears, select Uninstall from the pop-up menu in the upper left and click the Uninstall button.
6. Do one of the following:

**Mac OS X 10.5:**

Select System Preferences, select Print & Fax, select EPSON Stylus Photo 1400, and click the – button.

### Mac OS X 10.3/10.4:

Open the Applications folder on your hard drive, select Utilities, choose Printer Setup Utility, select EPSON Stylus Photo 1400, and click Delete.

7. Restart your Macintosh, then see the *Start Here* sheet to reinstall your software.

---

## Where To Get Help

### *Epson Technical Support*

Epson provides these technical support services:

#### **Internet Support**

Visit Epson's support website at **epson.com/support** and select your product for solutions to common problems. You can download drivers and documentation, get FAQs and troubleshooting advice, or e-mail Epson with your questions.

#### **Speak to a Support Representative**

Before you call Epson for support, please have the following information ready:

- Product name (Epson Stylus Photo 1400)
- Product serial number (located on the back of the Epson Stylus Photo 1400)
- Proof of purchase (such as a store receipt) and date of purchase
- Computer configuration
- Description of the problem

Then call:

- U.S.: (562) 276-7282, 6 AM to 6 PM, Pacific Time, Monday through Friday
- Canada: (905) 709-2567, 6 AM to 6 PM, Pacific Time, Monday through Friday.

Days and hours of support are subject to change without notice. Toll or long distance charges may apply.

## ***Purchase Supplies and Accessories***

You can purchase genuine Epson ink and paper at Epson Supplies Central at **[www.epson.com/ink3](http://www.epson.com/ink3)** (U.S. sales) or **[www.epson.ca](http://www.epson.ca)** (Canadian sales). You can also purchase supplies from an Epson authorized reseller. To find the nearest one, call 800-GO-EPSON (800-463-7766).

## ***Other Software Technical Support***

Adobe Photoshop Elements

Telephone: (206) 675-6358

Web: [www.adobe.com/support](http://www.adobe.com/support)

# Requirements and Notices

---

## Windows System Requirements

To use your printer and its software, your system should have:

- A Microsoft® Windows compatible PC with a Pentium® III 800 MHz processor (Pentium 4 processor, 2 GHz or faster recommended)
- Microsoft Windows 2000, Windows XP, Windows XP Professional x64 Edition, or Windows Vista
- 512MB RAM (2GB or more recommended)
- 300MB free hard disk space (1GB or more recommended)
- SVGA monitor with at least a 256 color display
- CD or DVD drive for installing the printer software
- USB connection requires a computer with preinstalled Windows 2000, Windows XP, Windows XP Professional x64 Edition, or Windows Vista; a Windows-compliant USB port (Windows-compliant Hi-Speed USB 2.0 port recommended); and a shielded USB 2.0 “AB” cable. Using an improperly shielded cable or a USB 1.1 cable may cause the printer to malfunction.

---

## Macintosh System Requirements

To use your printer and its software, your system should have:

- Macintosh PowerPC® G4 733 MHz or faster, or Intel® Core™ processor
- Macintosh OS X 10.2.8, 10.3.9, 10.4.x, or 10.5.x
- 512MB RAM (2GB or more recommended)
- 300MB free hard disk space (1GB or more recommended)
- SVGA monitor with at least a 256 color display
- CD or DVD drive for installing the printer software
- A built-in USB port (Hi-Speed USB 2.0 port recommended)
- A shielded USB 2.0 “AB” cable. Using an improperly shielded cable or a USB 1.1 cable may cause the printer to malfunction.

---

# Important Safety Instructions

Before using the printer, read and follow these safety instructions.

- Be sure to follow all warnings and instructions marked on the printer.
- Use only the type of power source indicated on the printer's label.
- Use only the power cord that comes with the printer. Use of another cord may result in fire or electric shock.
- Place the printer near a wall outlet where the plug can be easily unplugged.
- Do not let the power cord become damaged or frayed.
- If you use an extension cord with the printer, make sure that the total ampere rating of the devices plugged into the extension cord does not exceed the cord's ampere rating. Also, make sure that the total ampere rating of all devices plugged into the wall outlet does not exceed the wall outlet's ampere rating.
- Avoid using outlets on the same circuit as photocopiers or air control systems that regularly switch on and off.
- Avoid electrical outlets controlled by wall switches or automatic timers.
- Keep the entire computer system away from potential sources of electromagnetic interference, such as loudspeakers or the base units of cordless telephones.
- Avoid locations that are subject to rapid changes in temperature or humidity, shocks or vibrations, or dust.
- Do not place the printer near a radiator, heating vent, or other heat source, or in strong light or direct sunlight.
- Leave enough room around the printer to allow for sufficient ventilation.
- Do not block or cover openings in the printer case or insert objects through the slots.
- Place the printer on a flat, stable surface that extends beyond the base in all directions. It will not operate properly if it is tilted at an angle.
- Make sure the back of the printer is at least 4 inches (10 cm) away from the wall.
- Do not spill liquid on the printer.
- Do not put your hand inside the printer or touch the ink cartridges during printing.
- Do not use aerosol products that contain flammable gases inside or around this product. Doing so may cause fire.
- Do not move the print head by hand; otherwise, you may damage the printer.
- Always turn the printer off using the ⏻ power button. When this button is pressed, the green ⏻ power light flashes. Do not unplug the printer or turn off the power to the outlet until the green ⏻ power light stops flashing.

- Before transporting the printer, make sure that the print head is in the home (far right) position and the ink cartridges are in place.
- Leave the ink cartridges installed. Removing the cartridges can dehydrate the print head and may prevent the printer from printing.
- Except as specifically explained in your documentation, do not attempt to service the printer yourself.
- Unplug the printer and refer servicing to qualified service personnel under the following conditions: if the power cord or plug is damaged; if liquid has entered the printer; if the printer has been dropped or the case damaged; if the printer does not operate normally or exhibits a distinct change in performance. Adjust only those controls that are covered by the operating instructions.
- When connecting the printer to a computer or other device with a cable, ensure the correct orientation of the connectors. Each connector has only one correct orientation. Inserting a connector in the wrong orientation may damage both devices connected by the cable.
- When storing or transporting the printer, do not tilt it, stand it on its side, or turn it upside down; otherwise, ink may leak from the cartridges.

## ***Ink Cartridge Safety Instructions***

- Keep ink cartridges out of the reach of children and do not drink the ink.
- Do not shake ink cartridges after opening their packages; this can cause leakage.
- Be careful when you handle used ink cartridges; there may be ink remaining around the ink supply port. If ink gets on your skin, wash it off with soap and water. If it gets in your eyes, flush them immediately with water.
- Do not remove or tear any label or seal on the cartridge other than the yellow tab; this can cause leakage.
- Install an ink cartridge immediately after you remove it from its package. Leaving the cartridge unpacked for a long time before using it can result in reduced print quality.
- Do not use an ink cartridge beyond the date printed on the package. For best results, use up the ink cartridges within six months of first installing them.
- Do not dismantle ink cartridges or try to refill them. This could damage the print head.
- After bringing an ink cartridge inside from a cold storage site, allow it to warm up at room temperature for at least three hours before using it.
- Store ink cartridges in a cool, dark place.
- Do not touch the green IC chip on the side of the cartridge. Doing so may prevent normal operation and printing.

- The IC chip on these ink cartridges retains a variety of cartridge related-information, such as the ink cartridge status, so that the cartridge may be removed and reinserted freely. However, each time the cartridge is inserted, some ink is consumed because the printer automatically performs a reliability check.
- If you remove an ink cartridge for later use, protect the ink supply area from dirt and dust, and store it in the same environment as the printer. A valve in the ink supply port makes covers or plugs unnecessary, but the ink may stain items that come into contact with this area of the cartridge. Do not touch the ink supply port or the surrounding area.
- Store ink cartridges with their labels facing upward. Do not store cartridges upside down.

---

## FCC Compliance Statement

### *For United States Users*

This equipment has been tested and found to comply with the limits for a Class B digital device, pursuant to Part 15 of the FCC Rules. These limits are designed to provide reasonable protection against harmful interference in a residential installation. This equipment generates, uses, and can radiate radio frequency energy and, if not installed and used in accordance with the instructions, may cause harmful interference to radio or television reception. However, there is no guarantee that interference will not occur in a particular installation. If this equipment does cause interference to radio and television reception, which can be determined by turning the equipment off and on, the user is encouraged to try to correct the interference by one or more of the following measures:

- Reorient or relocate the receiving antenna.
- Increase the separation between the equipment and receiver.
- Connect the equipment into an outlet on a circuit different from that to which the receiver is connected.
- Consult the dealer or an experienced radio/TV technician for help.



**WARNING:** The connection of a non-shielded equipment interface cable to this equipment will invalidate the FCC Certification of this device and may cause interference levels which exceed the limits established by the FCC for this equipment. It is the responsibility of the user to obtain and use a shielded equipment interface cable with this device. If this equipment has more than one interface connector, do not leave cables connected to unused interfaces. Changes or modifications not expressly approved by the manufacturer could void the user's authority to operate the equipment.

### ***For Canadian Users***

This Class B digital apparatus complies with Canadian ICES-003.

*Cet appareil numérique de la classe B est conforme à la norme NMB-003 du Canada.*

---

## **Declaration of Conformity**

According to 47CFR, Part 2 and 15 for Class B Personal Computers and Peripherals; and/or CPU Boards and Power Supplies used with Class B Personal Computers:

We: Epson America, Inc.  
Located at: MS: 3-13  
3840 Kilroy Airport Way  
Long Beach, CA 90806-2469  
Telephone: (562) 290-5254

Declare under sole responsibility that the product identified herein, complies with 47CFR Part 2 and 15 of the FCC rules as a Class B digital device. Each product marketed is identical to the representative unit tested and found to be compliant with the standards. Records maintained continue to reflect the equipment being produced can be expected to be within the variation accepted, due to quantity production and testing on a statistical basis as required by 47CFR §2.909. Operation is subject to the following two conditions: (1) this device may not cause harmful interference, and (2) this device must accept any interference received, including interference that may cause undesired operation.

Trade Name: Epson  
Type of Product: Ink Jet Printer  
Model: B321B

---

# Epson America, Inc. Limited Warranty

**What Is Covered:** Epson America, Inc. ("Epson") warrants to the original retail purchaser that the Epson printer covered by this limited warranty statement, if purchased and operated only in the United States or Canada, will be free from defects in workmanship and materials for a period of one (1) year from the date of original purchase. For warranty service, you must provide proof of the date of original purchase.

**What Epson Will Do To Correct Problems:** Should your Epson printer prove defective during the warranty period, please call the Epson Connection<sup>SM</sup> at (562) 276-7296 (U.S.) or (905) 709-2567 (Canada) for warranty repair instructions and return authorization. An Epson service technician will provide telephone diagnostic service to determine whether the printer requires service. If service is needed, Epson will, at its option, exchange or repair the printer without charge for parts or labor. If Epson authorizes an exchange for the defective unit, Epson will ship a replacement printer to you, freight prepaid, so long as you use an address in Canada or the U.S. (excluding Puerto Rico and U.S. Possessions). Shipments to other locations will be made freight collect. You are responsible for securely packaging the defective unit and returning it to Epson within five (5) working days of receipt of the replacement. Epson requires a debit or a credit card number to secure the cost of the replacement printer in the event that you fail to return the defective one. If your printer is being repaired, Epson will direct you to send your printer to Epson or its authorized service center, where the printer will be fixed and sent back to you. You are responsible for packing the printer and for all costs to and from the Epson authorized service center. When warranty service involves the exchange of the printer or a part, the item replaced becomes Epson property. The replacement printer or part may be new or refurbished to the Epson standard of quality, and, at Epson's option, may be another model of like kind and quality. Epson's liability for replacement of the covered printer will not exceed the original retail selling price of the covered printer. Exchange products and parts assume the remaining warranty period of your original product covered by this limited warranty.

**What This Warranty Does Not Cover:** This warranty does not apply to refurbished or reconditioned products. This warranty covers only normal use in the United States and Canada. Using this product for continuous production or similar high duty purposes is not considered normal use; damage, maintenance or service from such use will not be covered under this warranty. This warranty is not transferable. This warranty does not cover any color change or fading of prints or reimbursement of materials or services required for reprinting. This warranty does not cover damage to the Epson product caused by parts or supplies not manufactured, distributed or certified by Epson. This warranty does not cover ribbons, ink cartridges or third party parts, components, or peripheral devices added to the Epson product after its shipment from Epson, e.g., dealer or user-added boards or components. Epson is not responsible for warranty service should the Epson label or logo or the rating label or serial number be removed or should the product

fail to be properly maintained or fail to function properly as a result of misuse, abuse, improper installation, neglect, improper shipping, damage caused by disasters such as fire, flood, and lightning, improper electrical current, software problems, interaction with non-Epson products, or service other than by an Epson Authorized Servicer. If a claimed defect cannot be identified or reproduced, you will be held responsible for the costs incurred.

THE WARRANTY AND REMEDY PROVIDED ABOVE ARE EXCLUSIVE AND IN LIEU OF ALL OTHER EXPRESS OR IMPLIED WARRANTIES INCLUDING, BUT NOT LIMITED TO, THE IMPLIED WARRANTIES OF MERCHANTABILITY, NON-INFRINGEMENT OR FITNESS FOR A PARTICULAR PURPOSE. SOME LAWS DO NOT ALLOW THE EXCLUSION OF IMPLIED WARRANTIES. IF THESE LAWS APPLY, THEN ALL EXPRESS AND IMPLIED WARRANTIES ARE LIMITED TO THE WARRANTY PERIOD IDENTIFIED ABOVE. UNLESS STATED HEREIN, ANY STATEMENT OR REPRESENTATIONS MADE BY ANY OTHER PERSON OR FIRM ARE VOID. EXCEPT AS PROVIDED IN THIS WRITTEN WARRANTY, NEITHER EPSON AMERICA, INC. NOR ITS AFFILIATES SHALL BE LIABLE FOR ANY LOSS, INCONVENIENCE, OR DAMAGE, INCLUDING DIRECT, SPECIAL, INCIDENTAL OR CONSEQUENTIAL DAMAGES, RESULTING FROM THE USE OR INABILITY TO USE THE EPSON PRODUCT, WHETHER RESULTING FROM BREACH OF WARRANTY OR ANY OTHER LEGAL THEORY.

In Canada, warranties include both warranties and conditions.

Some jurisdictions do not allow limitations on how long an implied warranty lasts, and some jurisdictions do not allow the exclusion or limitation of incidental or consequential damages, so the above limitations and exclusions may not apply to you. This warranty gives you specific legal rights and you may have other rights which vary from jurisdiction to jurisdiction.

To find the Epson Authorized Reseller nearest you, visit our website at:  
<http://www.epson.com>.

To find the Epson Customer Care Center nearest you, visit  
<http://support.epson.com>.

You can also write to:

Epson America, Inc., P.O. Box 93012, Long Beach, CA 90809-3012



# Index

## A

- Aligning print head, 57
- Automatic mode, Macintosh, 24

## B

- Banding, 67
- Basic printing
  - Macintosh, 20 to 26
  - Windows, 16 to 19
- Blank pages, 72
- Blurry images, 67 to 68
- Borderless expansion
  - Macintosh, 33
  - Windows, 32
- Borderless printing, 21, 28 to 33

## C

- Cable, USB, 77
- Camera/phone, printing from, 46
- Cancelling printing
  - Macintosh, 26
  - Windows, 19
- CDs
  - adjusting print density, 40 to 41, 45
  - adjusting print position, 39 to 40, 43 to 44
  - designing, 37 to 45
  - feeding problems, 72
  - inserting in printer, 35 to 36
  - printing on, 34 to 45
  - printing problems, 71 to 72
- Cell phone, printing from, 46
- Characters, incorrect, 73
- Checking printer, 63

## Cleaning

- print head, 48 to 49
- printer, 58
- rollers, 35, 70 to 71
- sheets, 58, 70 to 71

## Color management

- Windows, 18

## Color problems, 69

## D

- Declaration of Conformity, 81
- Default printer settings, Windows, 19
- Digital camera, printing from, 46
- Displaying photos, 34
- DVDs, *see* CDs

## E

- Edge-to-edge printing, 28 to 33
- Epson
  - help, 75 to 76
  - ink, 51
  - paper, 12, 15, 27, 28
  - Print CD, 37 to 45
  - Supplies Central, 14, 51, 76
  - warranty, 82 to 83
- Expansion, borderless
  - Macintosh, 33
  - Windows, 32

## F

- Faint images, 68
- FCC Compliance, 80 to 81
- Full bleed printing, 28 to 33

## G

Grainy prints, 69

## H

Head Cleaning utility, 48 to 49

Help, Epson, 75 to 76

## I

Incorrect characters, 73

Incorrect colors, 69

Incorrect margins, 72

Ink cartridge

- ordering, 51

- replacing, 50 to 56

- safety instructions, 52, 79 to 80

- status, 50 to 51

Ink status, checking, 50 to 51

Inverted image, 72

## J

Jams, paper, 70 to 71

## L

Layout problems, 73

Layout settings

- Windows, 18

Lights, status, 61 to 62

Loading paper, 9 to 12

## M

Macintosh

- basic printing, 20 to 26

- borderless printing, 21, 32 to 33

- monitoring print job, 23

- OS X 10.3 and 10.4, 23 to 25

- OS X 10.5 (Leopard), 20 to 23

- printing, 20 to 26

- system requirements, 77

- uninstalling software, 74 to 75

Maintaining printer, 47 to 59

Marginless printing, 28 to 33

Margins, incorrect, 72

Media Type setting, 27

Mirror image, 72

Monitoring ink status, 50 to 51

Monitoring print job, 23

Moving printer, 59

## N

Noise, printer, 66

Nozzle check, 47 to 48

## O

Orientation setting

- Macintosh, 21, 23

- Windows, 17

## P

Page Setup, Macintosh, 23

Paper

- Epson, 12, 15, 27, 28

- feeding problems, 69 to 71

- loading, 9 to 12

- orientation, Macintosh, 23

- orientation, Windows, 17

- size, Macintosh, 23

- size, Windows, 17

- Paper Type setting, 27
- Phone, printing from, 46
- Photos
  - borderless, 21, 28 to 33
  - displaying and storing, 34
  - printing, 28 to 33
- Print head
  - aligning, 57
  - cleaning, 48 to 49
- Print Head Alignment utility, 57
- Print job, monitoring, 23
- Print quality problems, 67 to 69
- Print window
  - Macintosh, 24
  - Windows, 16
- Printer
  - check, 63
  - cleaning, 58
  - maintaining, 47 to 59
  - noise, 66
  - problems, 65 to 66
  - transporting, 59
- Printing
  - basic, 16 to 26
  - borderless photos, 28 to 33
  - CDs and DVDs, 34 to 45
  - controlling, Macintosh, 26
  - controlling, Windows, 19
  - Macintosh, 20 to 26
- Printing, slow, 66
- Problems
  - CD printing, 71 to 72
  - color, 69
  - installing software, 64 to 65
  - miscellaneous, 72 to 73
  - paper feeding, 69 to 71
  - print quality, 67 to 69
  - printer, 65 to 66
  - solving, 61 to 76

## Q

- Quality Option setting, 17
- Quality/Speed setting, 24

## R

- Rollers, cleaning, 35, 70 to 71

## S

- Safety instructions, 52, 78 to 80
- Service, 75
- Slow printing, 66
- Software
  - Epson Print CD, 37 to 45
  - problems, solving, 64 to 65
  - uninstalling, 74 to 75
- Stopping printing
  - Macintosh, 26
  - Windows, 19
- Storing photos, 34
- Supplies Central, 51, 76
- Support, 75
- System requirements, 77

## T

- Transporting printer, 59
- Troubleshooting, 61 to 76
- Type setting, 27

## U

- Uninstalling software, 74 to 75
- USB
  - cable, 77
  - port for camera/phone, 46
- Utilities
  - Head Cleaning, 48 to 49
  - Nozzle Check, 47 to 48
  - Print Head Alignment, 57

# W

Warranty, 82 to 83

Windows

- basic printing, 16 to 19

- borderless printing, 29 to 32

- system requirements, 77

- uninstalling software, 74